

REVISIONS				
ZONE	REV	DESCRIPTION	DATE	APPD
	4	REMOVED 2x220 HP ROVs. INSTALLED PORT 150 HP ROV	7/27/17	MGS
	5	INSTALLED STBD 150 HP ROV	8/23/17	MGS

PRINCIPAL PARTICULARS

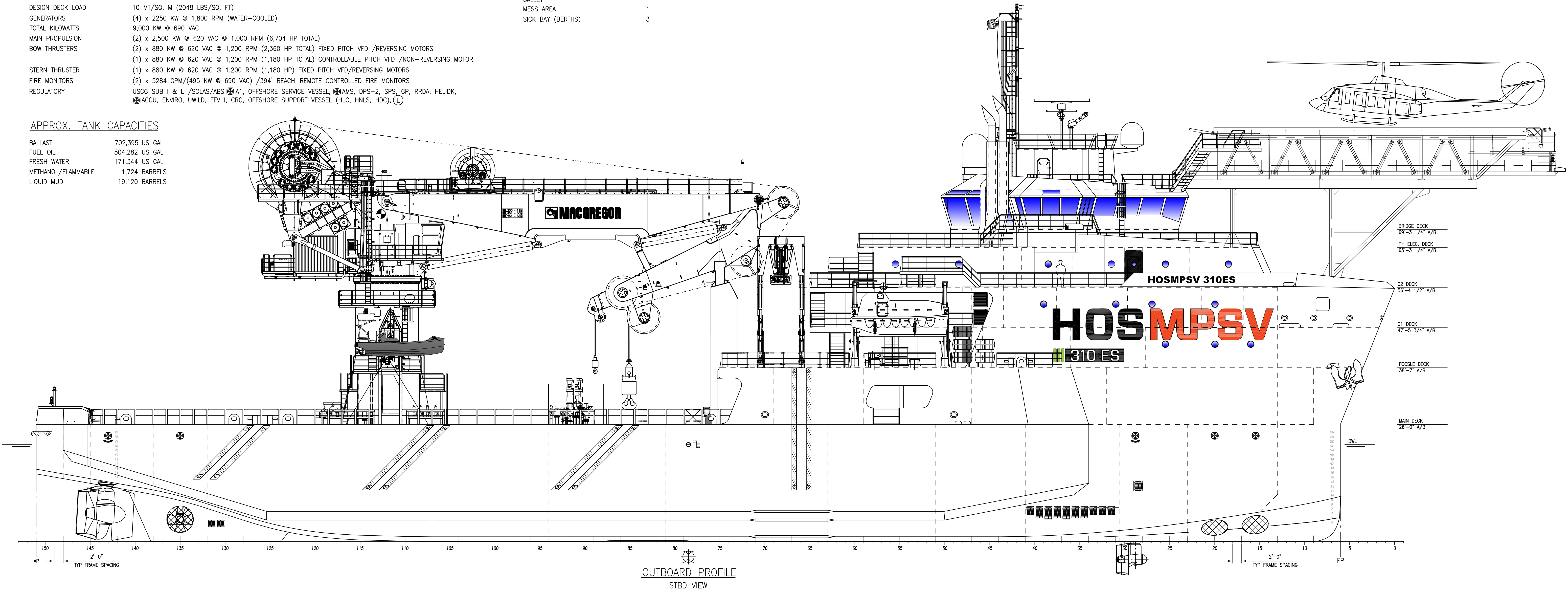
LOA 302'-0"
LBP - LWL 290'-0"
BEAM 76'-0"
DEPTH 26'-0"
LOADLINE DRAFT 21'-4"
DESIGN DECK LOAD 10 MT/SQ. M (2048 LBS/SQ. FT)
GENERATORS (4) x 2250 KW @ 1,800 RPM (WATER-COOLED)
TOTAL KILOWATTS 9,000 KW @ 690 VAC
MAIN PROPULSION (2) x 2,500 KW @ 620 VAC @ 1,000 RPM (6,704 HP TOTAL)
BOW THRUSTERS (2) x 880 KW @ 620 VAC @ 1,200 RPM (2,360 HP TOTAL) FIXED PITCH VFD /REVERSING MOTORS
(1) x 880 KW @ 620 VAC @ 1,200 RPM (1,180 HP TOTAL) CONTROLLABLE PITCH VFD /NON-REVERSING MOTOR
STERN THRUSTER (1) x 880 KW @ 620 VAC @ 1,200 RPM (1,180 HP) FIXED PITCH VFD/REVERSING MOTORS
FIRE MONITORS (2) x 5284 GPM/(495 KW @ 690 VAC) /394' REACH-REMOTE CONTROLLED FIRE MONITORS
REGULATORY USCG SUB I & L /SOLAS/ABS A1, OFFSHORE SERVICE VESSEL, AMS, DPS-2, SPS, GP, RRDA, HELIDK, ACCU, ENVIRO, UWILD, FFV I, CRC, OFFSHORE SUPPORT VESSEL (HLC, HNLS, HDC), E

SUMMARY TABLE


ACCOMMODATIONS 85 (7x4 MAN, 1x3 MAN, 22x2 MAN, 10x1 MAN)
STATEROOMS 40
HEADS 35
LOUNGE 1
LAUNDRY AREA 1
GALLEY 1
MESS AREA 1
SICK BAY (BERTHS) 3

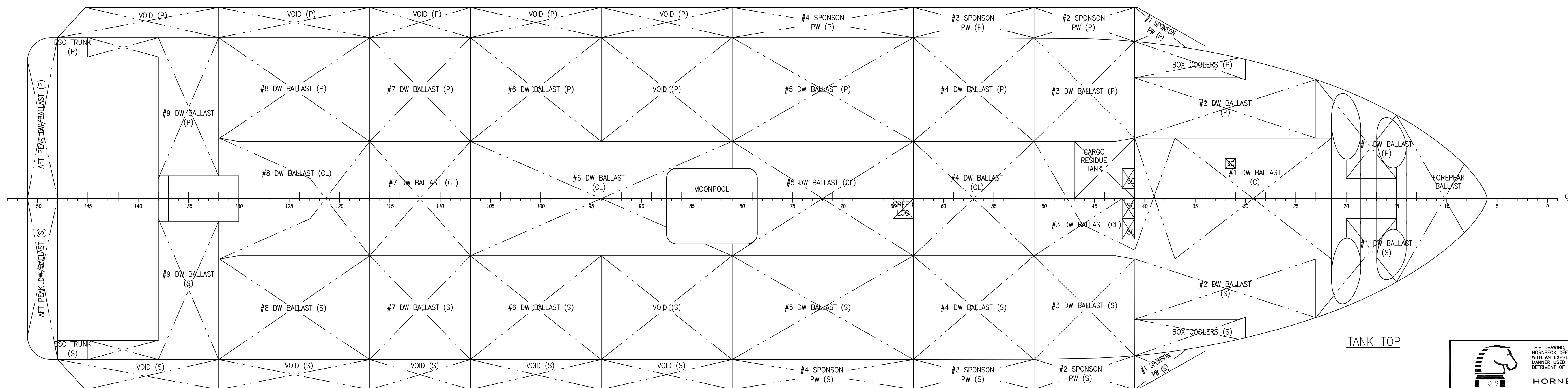
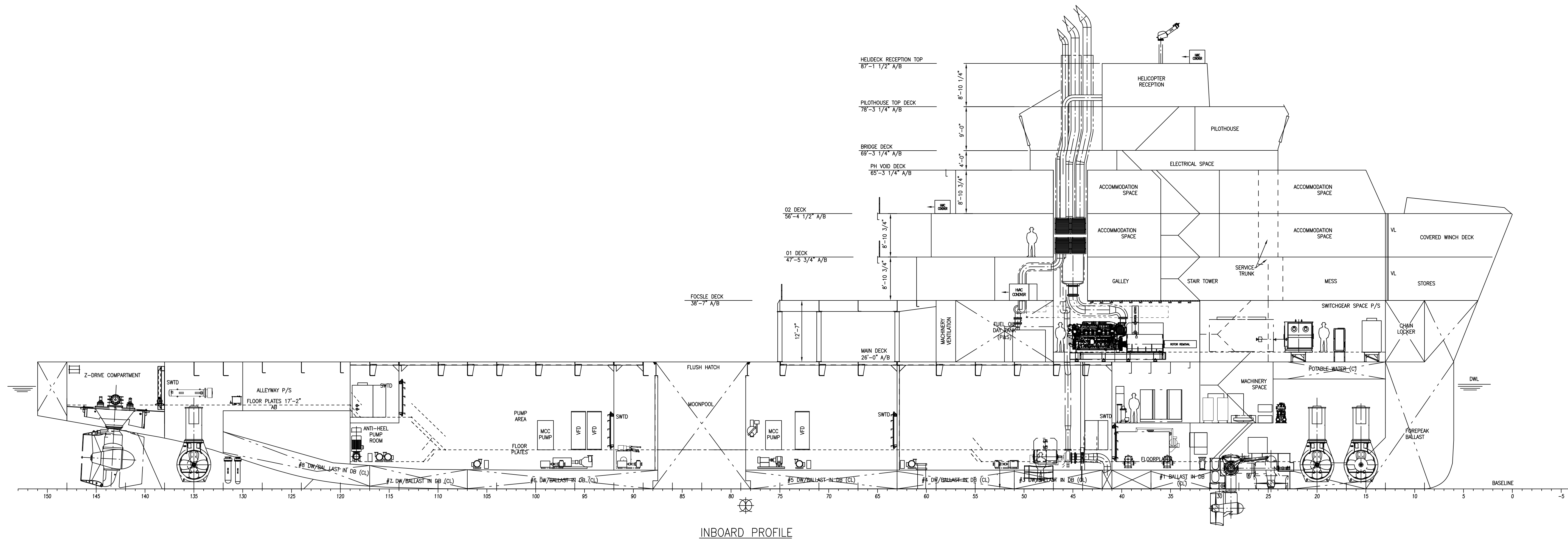
APPROX. TANK CAPACITIES


BALLAST 702,395 US GAL
FUEL OIL 504,282 US GAL
FRESH WATER 171,344 US GAL
METHANOL/FLAMMABLE 1,724 BARRELS
LIQUID MUD 19,120 BARRELS



HOS MAX (310 ES) MPSV

		THIS DRAWING, DESIGN CONCEPT AND SPECIFICATIONS ARE THE PROPERTY OF HORNBECK OFFSHORE SERVICES AND ARE FURNISHED ON A CONFIDENTIAL BASIS WITH AN EXPRESSED UNDERSTANDING THAT THEY WILL NOT BE COPIED IN ANY MANNER USED FOR MANUFACTURE, SOLD, TRANSFERRED, NOR USED TO THE DETRIMENT OF SAID FIRM WITHOUT WRITTEN PERMISSION.			HOS ©
DRAWN BY: ZMW		HORNBECK OFFSHORE SERVICES			
CH'KD. BY: MGS		HOS MPSV 310ES			
APP'D. BY: PAL		GENERAL ARRANGEMENT			
TASK # 6613		SCALE: 1/8"=1'-0"	DATE: 08-22-18	REV. 5	
		DRAWING # 1.001	HULL#: ESG-241		
		SHEET 1 OF 5			



 <small>THIS DRAWING, DESIGN CONCEPT AND SPECIFICATIONS ARE THE PROPERTY OF HORNBECK OFFSHORE SERVICES AND ARE FURNISHED ON A CONFIDENTIAL BASIS WITH AN EXPRESSED UNDERSTANDING THAT THEY WILL NOT BE COPIED IN ANY MANNER USED FOR MANUFACTURE, SOLD, TRANSFERRED, NOR USED TO THE DETRIMENT OF SAID FIRM WITHOUT WRITTEN PERMISSION.</small> HOS			
HORNBECK OFFSHORE SERVICES			
DRAWN BY: ZMW		HOS MPSV 310ES	
CH'KD. BY: MGS		GENERAL ARRANGEMENT	
APP'D. BY: PAL		SCALE: 1/8"=1'-0"	DATE: 08-22-18
TASK # 6613		DRAWING # 1.001	HULL#: ESG-241
		SHEET 2 OF 5	REV. 5

32

31

30

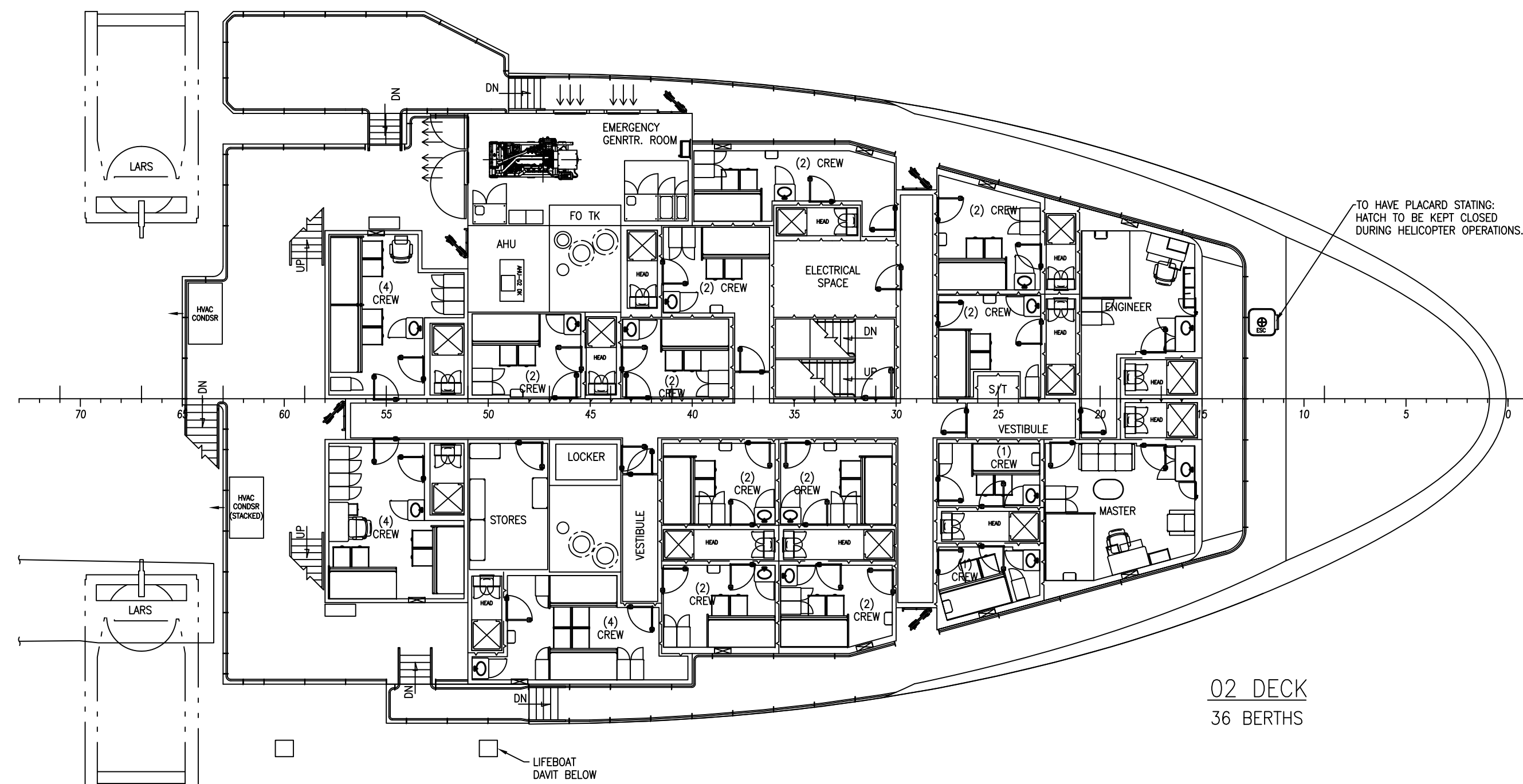
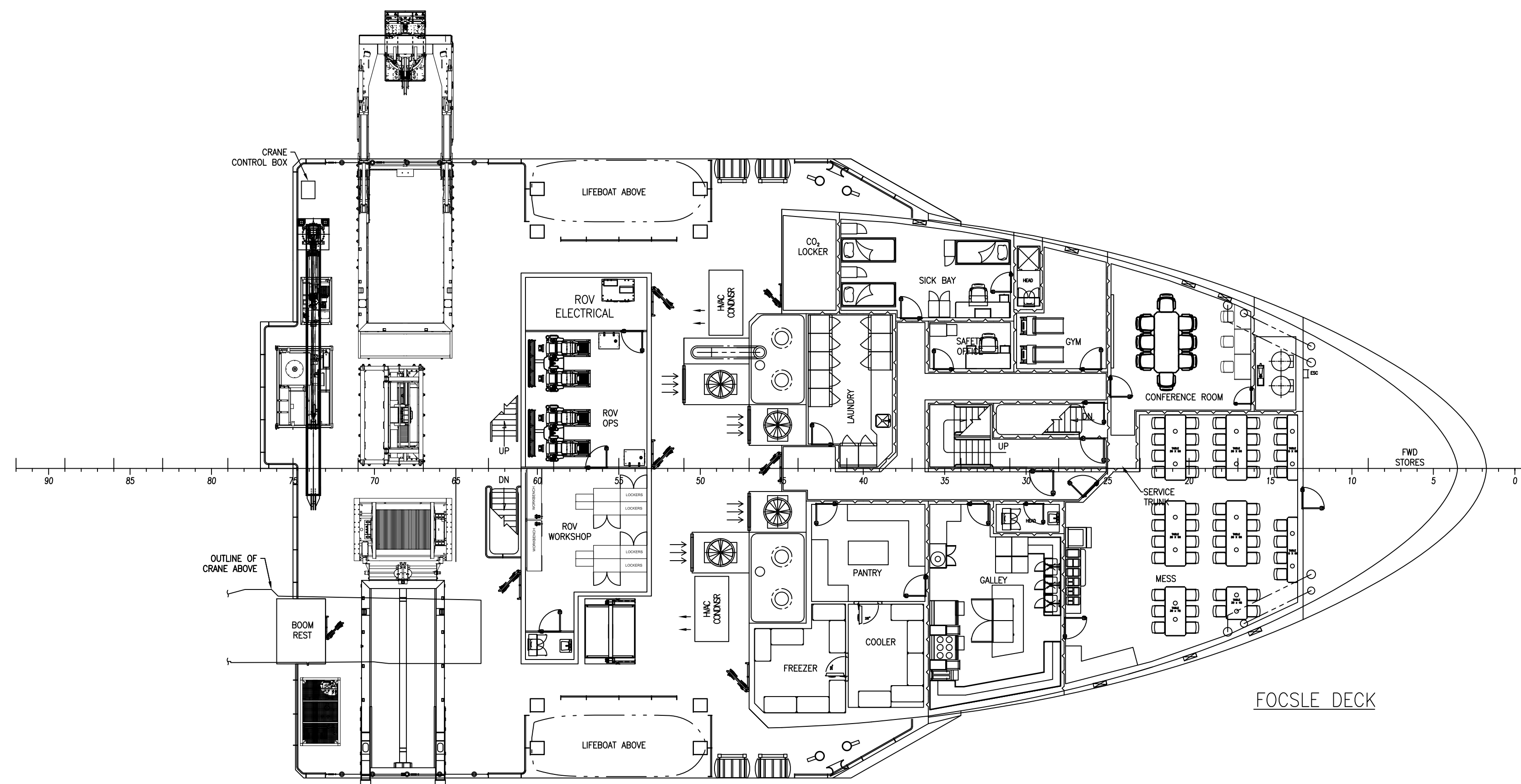
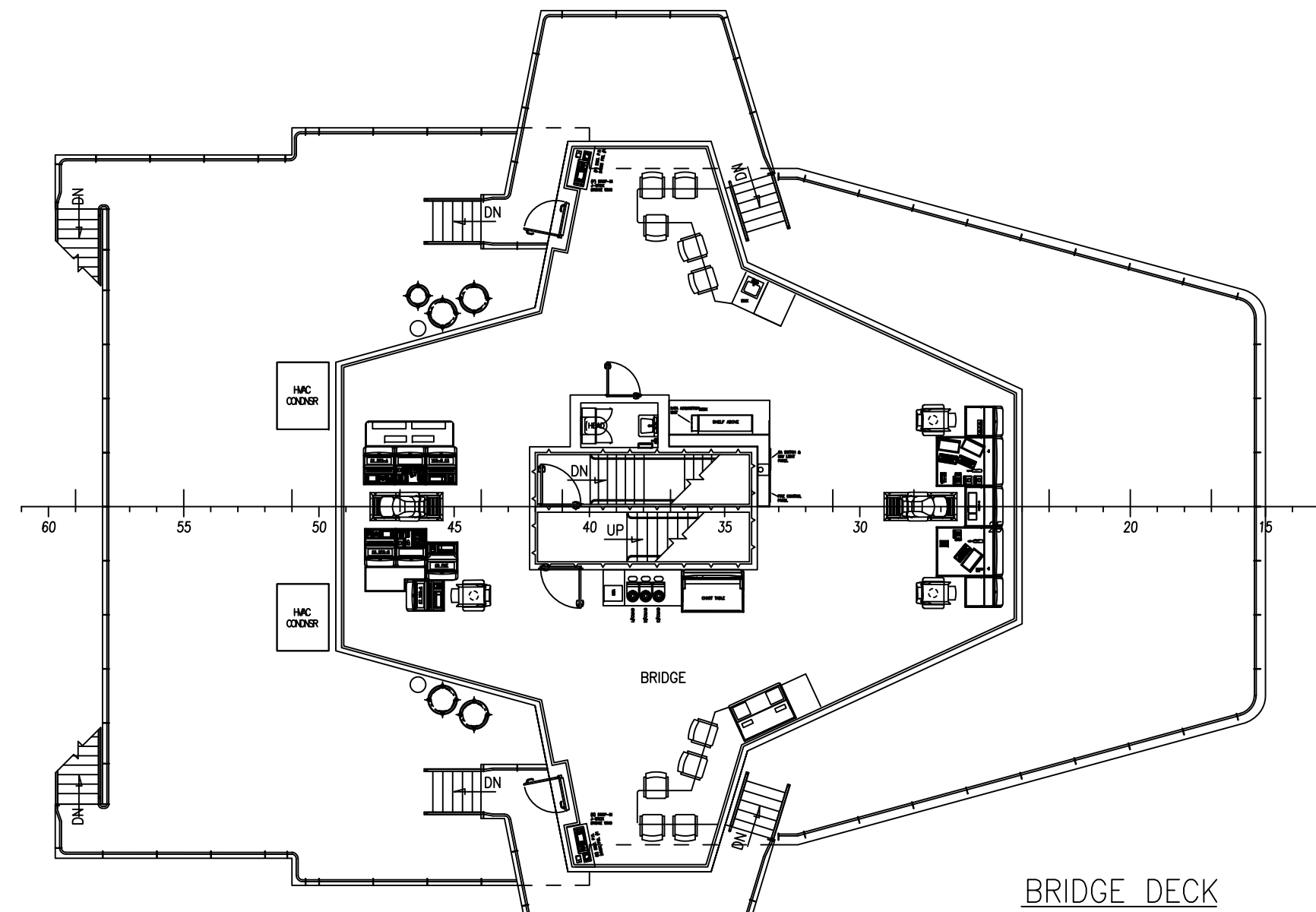
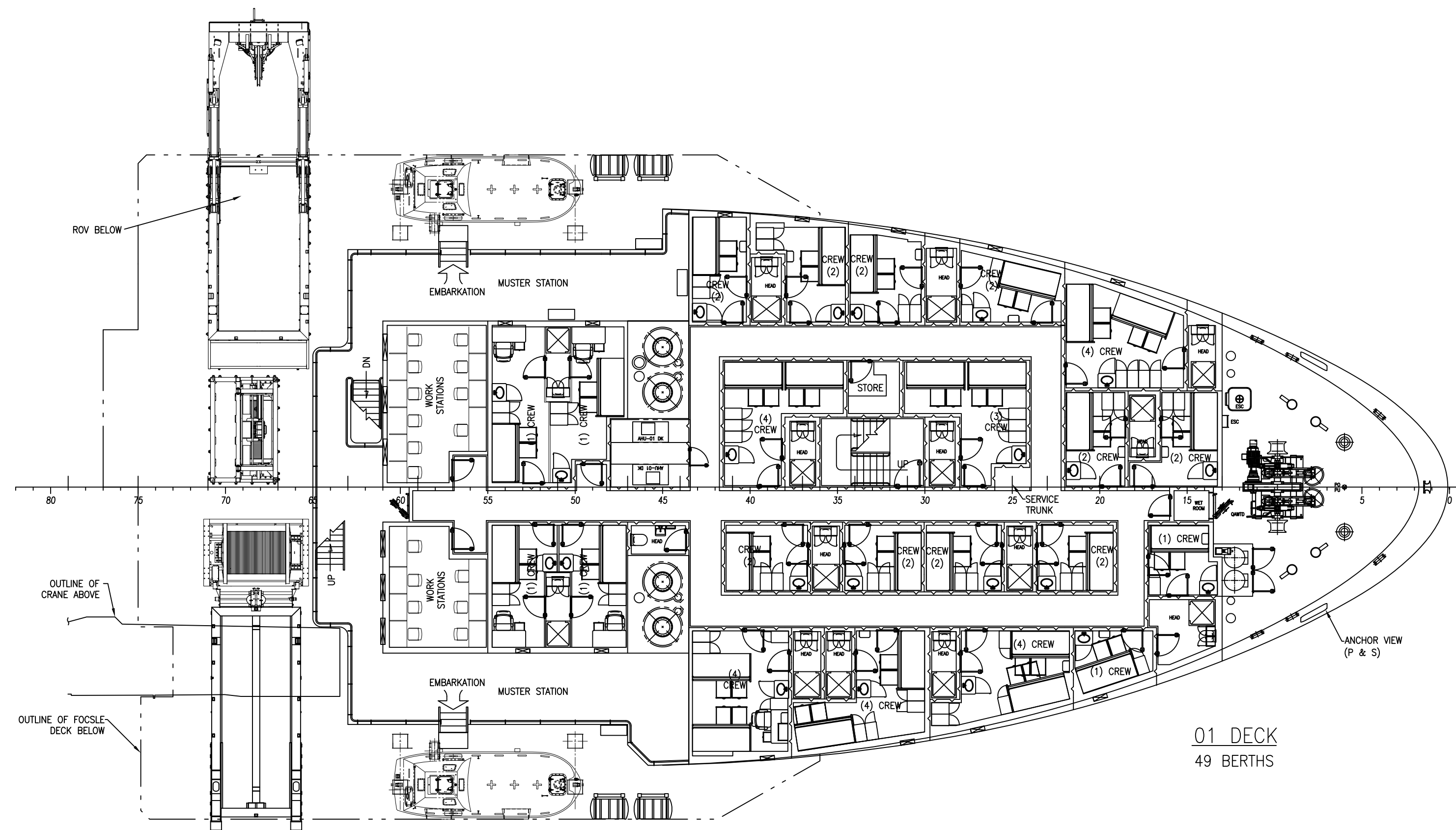
29


28

27

26

25



 HORNBECK OFFSHORE SERVICES			
DRAWN BY: ZMW		HOS MPSV 310ES	
CH'KD. BY: MGS		GENERAL ARRANGEMENT	
APP'D. BY: PAL		SCALE: 1/8"=1'-0"	DATE: 08-22-18
TASK # 6613		DRAWING # 1.001	HULL#: ESG-241
		SHEET 4 OF 5	REV. 5

