

DEEP ENDEAVOUR

VESSEL SPECIFICATION SHEET



MULTI PURPOSE SUPPORT VESSEL

Deep Endeavour is a flexible pipe repair vessel with more than 1 600m² of deck space. In 2012 she was fitted with a flexible repair holdback system. A 60T AHC subsea crane was also installed in 2012. Vessel has covered twin-tanks for cable storage, as well as a 6 m x 6 m moonpool. She has a built-in accommodation for 65 persons.

The Vessel has been supporting ROV operations and subsea maintenance activities.

KEY VESSEL FEATURES

- MULTIPURPOSE DP2 FLEXIBLE PIPE REPAIR VESSEL
- FLEXIBLE REPAIR HOLDBACK SYSTEM
- ROV OPERATIONS
- 6 X 6 M MOONPOOL
- 1600 M² WORK DECK AREA
- ACCOMODATION FOR 65 PERSONS TOTAL
- DIESEL ELECTRIC MACHINERY
- HELIDECK FOR SUPER PUMA

GENERAL

SHIP NAME	Deep Endeavour
TYPE	Multi Purpose Offshore Vessel
OWNER	DeepOcean Shipping II AS
OPERATOR	DeepOcean AS
BUILT	1999
BUILDER	Van der Giessen-de Noord
CLASSIFICATION	1A1 HELDK EO DYNPOS-AUTR
DNV ID NO	27018
ERN	99,99,99

MAIN CHARACTERISTICS

LENGTH O.A.	129,81 m
LENGTH B.P	119,05 m
BREADTH MLD	22,00 m
DRAFT AFT, MAX	6,76
DRAFT FWD, MAX	6,76
DEPTH TO MAIN DECK	9,50 m/11,00 m
DRAFT SWL	6,76
DRAFT DESIGN	6,25
SERVICE SPEED	Approx. 10 kts
MAX SPEED	Approx. 13 kts

FUEL CONSUMPTIONS

MAX SPEED	Approx. 40 m ³ /24 hrs
SERVICE SPEED	Approx. 20 m ³ /24 hrs
DP MODE	Approx. 12 m ³ /24 hrs
HARBOUR MODE	Approx. 5 m ³ /24 hrs

MAIN EQUIPMENT

MAIN ENGINES	4 x Wärtsilä 9L26A + 4 x ABB AMG 630 L 8 Generators (Diesel Electric)
NUMBER & POWER	4 x 2790 kW, Generators: 4 x 3350 kVA, 660 V
MAIN PROPELLERS	2 x aft azimuth thrusters Aquamaster equipped with fixed pitch and variable speed (2200 kW each)
EMERGENCY GENERATOR	Caterpillar 36408C DI-TA 410 kW.
BOW THRUSTERS	3 x tunnel thrusters, variable pitch, each 1335 kW.
TYPE	KaMeawa TT2200 CP-KIII
AZIMUT	N/A
TYPE	N/A
STERN THRUSTER	One stern tunnel thruster of 925kW, variable pitch.
TYPE	KaMeawa TT2000 CP-KIII

CARGO CAPABILITIES

MAIN DECK	1600 m ²
CARGO DECK STRENGTH	5 t/m ²

DECK CRANES

MAIN CRANE 1	TTS type CCLKO 1250-60-23 AHC SWL 60T @ 15 M, 36 T @ 20 M, wirelength 2000 m Aux winch, 15 T @ 23 m, wirelength 100 m
PROVISION CRANE	2 x Hydralift model: MCV 886-2-11 2 T @ 11 m radius



DEEP ENDEAVOUR

DECK EQUIPMENT

MOONPOOL	6 m x 6 m fitted with hinged type Non WT Plug, at the moment closed at deck
CAPSTANS (OPTIONAL)	3 x 5 T SWL Hydraulic Deck Tugger Winches (P&S)
HELIDECK	D 19,5 m SWL 9,5 T - Superpuma
MAIN WINCH	SWL 125 T, wirelength 1300 meter Aframe and wheel SWL 125 T
HOLDBACK SYSTEM	AXTECH/IK design 115 T

TANK CAPACITIES

FUEL OIL	1172 T
WATER BALLAST	3425 m ³
FRESH WATER	1062 m ³

NAVIGATIONAL EQUIPMENT

RADAR'S	Furuno FAR-2827 X-band Furuno FAR-2837S S-band
AUTO PILOT	Robertson AP9 MK3 Autopilot
GPS	2 x JRC J NAV 500
WIND SENSOR	2 x Wind Observer II
GYRO	Yokogawa 700, Type: CMZ 700B
RADIO INSTALLATION	GMDSS JRC NTD-825, JRC NCT 610-A, JRC JHS 32A, JRC JUE-75C, JRC NCR 300A, 4x NAVICO AXIS 250 GMDSS

VARIOUS SYSTEMS/EQUIPMENT

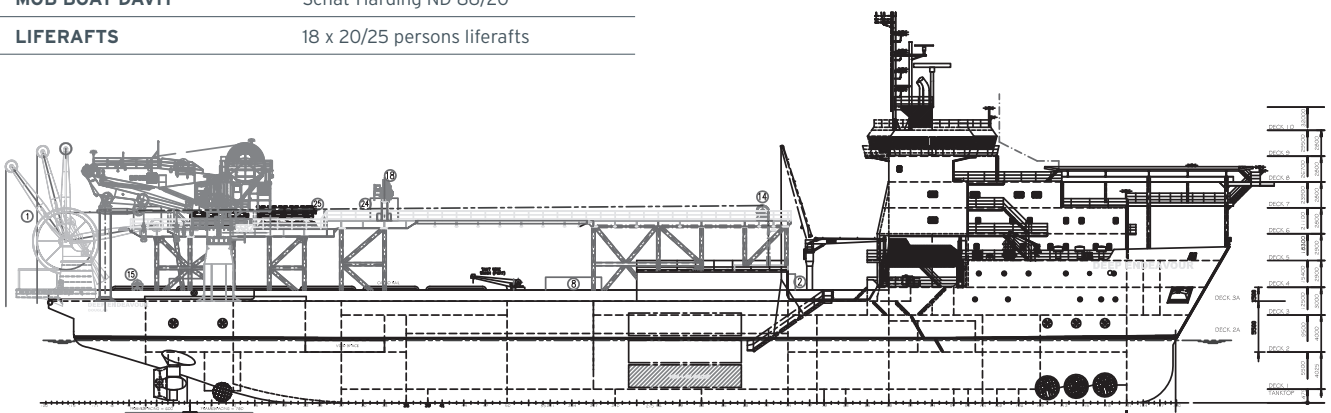
FRESHWATER GENERATOR	One Alfa Laval Type JWP-26-C80 evaporator, 20 m ³ pr. day Not useable during DP-operation. 2 x ENWA MT 35T SHR Reverse Fassmer Schiff- service GmbH (port lifeboat)
MOB BOAT	
MOB BOAT DAVIT	Schat-Harding ND 86/20
LIFERAFTS	18 x 20/25 persons liferafts

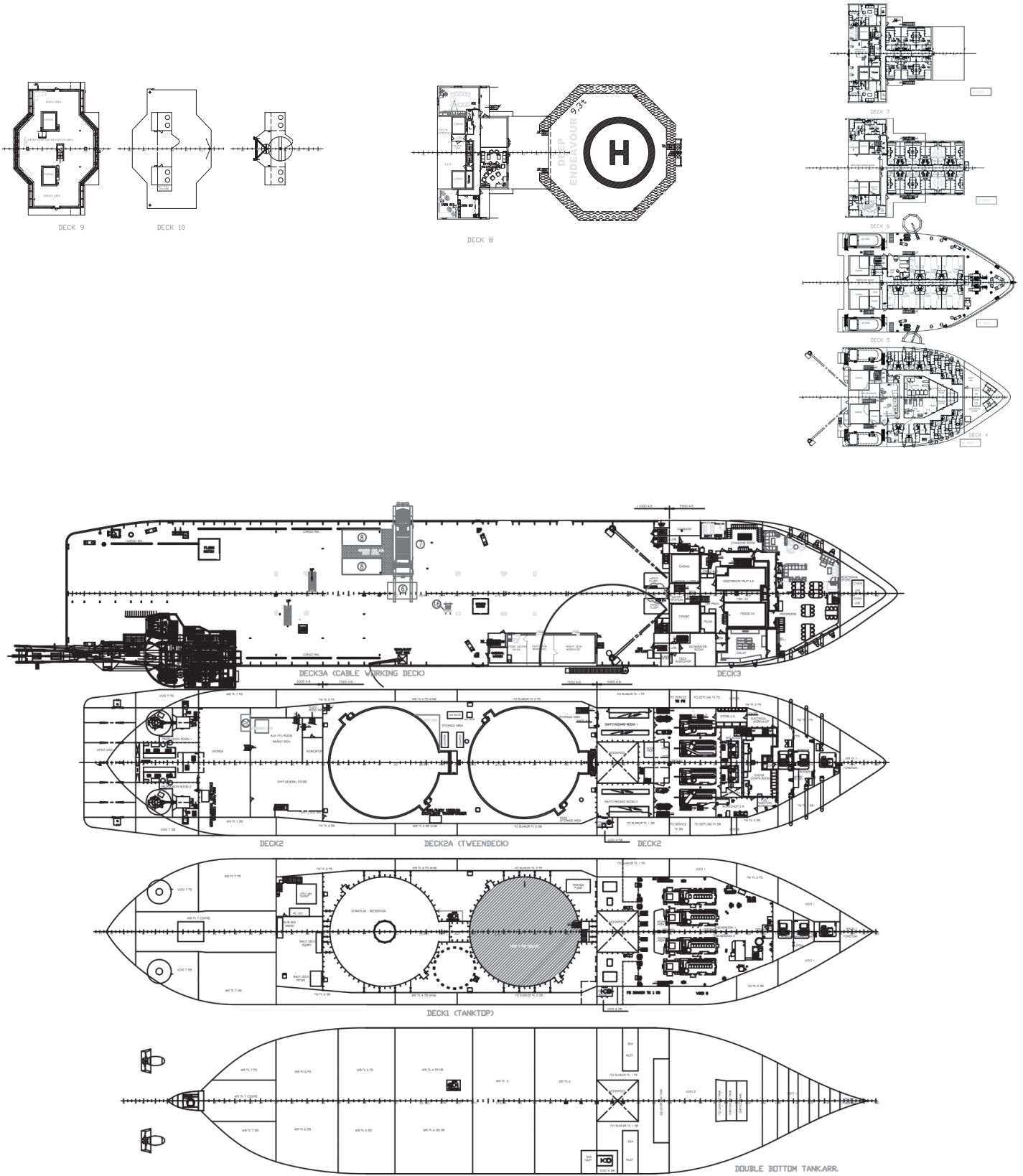
ACCOMMODATION

MESS ROOM	1 Messroom, 35 seats
RECREATION ROOM	Deck 3 and 8
CONFERENCE ROOM	Deck 8
RECEPTION ROOMS	Deck 8
CLIENT FACILITIES	2 Offices
OFFICES	3
WORKSHOP	Deck, engine, electrical.
POWER SUPPLY	220 V
STAT CABINS	3
SINGLE CABINS	11
2-MAN CABINS	25
3-MAN CABINS	0
5-MAN CABINS	0
6-MAN CABINS	0
HOSPITAL	1 x 3 beds
TOTAL	Accommodation 65

DYNAMIC POSITIONING SYSTEM

DP SYSTEM	Kongsberg K POS 21
HPR	Sonardyne Type Ranger Pro Processor and Transceiver
DGPS	Kongsberg Seatex DPS 132, Kongsberg Seatex DPS 200 & Seastar HP8300
DP LASER SENSOR	DP Laser Sensor CyScan GSC ltd
TAUT WIRE	LWTW Alstom TW 901
GYRO COMPASSES	3 x Yokogawa 700, Type: CMZ 700B
MOTION REFERENCE UNIT	2 x TSS RP25
WIND SENSORS	2 x Wind Observer II





Revision Date 16.05.2017

DeepOcean accepts no responsibility for and disclaims all liability for any errors and/or omissions in this production.

SPECIFICATION SUBJECT TO CHANGE WITHOUT NOTICE.

www.deepoceangroup.com