

DEEP VISION

VESSEL SPECIFICATION SHEET



SUBSEA IMR, SURVEY, ROV SUPPORT VESSEL

Deep Vision is a modern and flexible Subsea IMR and Survey Vessel with a well proven track record. The vessel is equipped with a DP2 system and 3 ROV systems. This combined with the large deck area and the 60 Te AHC (activeheave compensated) crane makes the vessel a versatile work station for IMR, survey and construction support operations. The vessel can also serve as a PSV given its tank and deck capacities.

The Vessel was rebuilt in 2012, where the accomodation and superstructure capacity was increased, and ROV hangars where in-corporated in the superstructure.

KEY VESSEL FEATURES

- SUBSEA IMR, SURVEY, ROV SUPPORT AND SUPPLY VESSEL
- DP2
- 60 TE ACTIVE HEAVE COMPENSATED OFFSHORE CRANE
- 720 M² DECK AREA
- ACCOMODATION FOR 70 PERSONS
- CLIENT OFFICES
- CONFERENCE ROOM
- 2 WORK CLASS ROVS IN HANGARS
- 1 OBSERVATION CLASS ROV
- HELIDECK FOR SUPER PUMA AS332LD, D VALUE 19,5 M
- LARS HANDLING SYSTEM FOR WROV AND OBS. ROV

GENERAL

SHIP NAME	MV Deep Vision
DESIGN	UT 745
OWNER	DeepOcean AS
BUILT	2002. Rebuilt 2012
BUILDER	Havyard Leirvik AS, Leirvik, Norway
CLASSIFICATION	DnV, +1A1, SF, E0, DK+, HL(2,8), T-MON, DYN POS AUTR(DP2), LFL*, OIL REC, Clean, COMF- V(3)C(3) (Vessel prepared for NOFO-2000)
DNV ID NO	23596
ERN	99,99,95

MAIN CHARACTERISTICS

LENGTH O.A	85,25 m
LENGTH B.P	76,20 m
BREADTH, MLD	18,80 m
DEPTH, MLD	7,60 m
DRAFT, SUMMER	6,35 m
FREEBOARD, SUMMER	1,262 m
DRAFT, MINIMUM	3,80 m
SERVICE SPEED	13 kts
MAX SPEED	15 kts

FUEL CONSUMPTIONS

MAX SPEED	Approx. 30 m ³ /24 hrs
SERVICE SPEED	Approx. 21 m ³ /24 hrs
DP MODE	Approx. 14 m ³ /24 hrs
HARBOUR MODE	Approx. 2 m ³ /24 hrs

MAIN EQUIPMENT

MAIN ENGINES	2 x Ulstein BRM-9 each 3 975kW, total 10 800 BHP Reduction Gears with 1-step primary PTO for Shaft Generators
ELECTRIC POWER PLANT	380/440 V AC - 50/60 Hz 2 x Shaft Alternators, each of 3 000 kVA
GENERATORS	2 x Generator sets, each of 738 kVA
HARBOUR GENERATORS	1 x 156 kVA
TRANSFORMERS	2 x 80 kVA, 1 x 25 kVA (450/230)
FUEL TYPE	Gas Oil
PROPELLERS	2 x 3 500 mm diameter
THRUSTERS	2 x Kamewa Ulstein Super silent Thrusters of 1 200 BHP / 883 kW, fwd 2 x Kamewa Ulstein Thrusters of 800 BHP / 588 kW, aft
RUDDERS	Ulstein High Lift Flap Rudders
JOY STICK	Ulstein design - P485
ECONOMETER	Ulstein Integrated System

CARGO CAPABILITIES (DECK)

MAIN DECK	Approx. 720 m ²
DECK STRENGTH	10 Te/m ²
DECK CARGO CAP. (TONNES)	2 400 Te

DECK CRANES

OFFSHORE CRANE	60 Te AHC main wire, 10 Te AHC whip line
DECK CRANES	1 off 5 Te 2,3 - 15 m knuckle arm type SB 1 off 5 Te 2,3 - 12 m knuckle arm type BB

DECK EQUIPMENT

WINDLASS	1 x Ulstein Combined Windlass / Mooring Winch of 15,1 tonnes
CAPSTANS	2 x 10 tonnes pull

DEEP VISION

TANK CAPACITIES

FUEL OIL	1195 m ³
WATER BALLAST / DRILL WATER	1 000 m ³
POTABLE WATER	1 000 m ³
MUD	660 m ³
METHANOL	170 m ³
BRINE	700 m ³
DRY BULK / CEMENT	400 m ³ / 14 000 ft ³ in 8 tanks (8 x 47,9 m ³)

CARGO DISCHARGE CAPACITIES

FUEL OIL	250 m ³ per hour at 75 meters wall, 9 bar
POTABLE WATER	250 m ³ per hour at 75 meters wall, 9 bar
BRINE	2 x 100 m ³ per hour at 75 meters wall, 24/18 bar
MUD	2 x 75 m ³ per hour at 75 meters wall, 24 bar
METHANOL	2 x 50 m ³ per hour at 75 meters wall, 9 bar
BALLAST / DRILL WATER	250 m ³ per hour at 75 meters wall, 9 bar
BASE OIL	150 m ³ per hour at 75 meters wall, 9 bar
DRY BULK / CEMENT	100 tonnes per hour, 80 psi dual discharge system
SLOP	75 m ³ per hour, 18 bar
FLOW METERS	Flow meter with printer for fuel oil

CARGO TRANSFER CONNECTIONS

COUPLINGS, LINES	Weco 4", Weco 5" and Avery Hardoll 4" Several reducers available on board
-------------------------	--

VARIOUS SYSTEMS/EQUIPMENT

ANTI ROLLING SYSTEM	3 x Passive Ulstein Anti rolling tanks
SAFETY EQUIPMENT	Acc. to SOLAS for World Wide Operation
HELIDECK	Design max Super Puma AS332LD max wt 9,3 t D value 19,5 m
ROV SYSTEM	2 x Wrovs in separate hangars. 1 x Obsrov on deck.

ACCOMMODATION

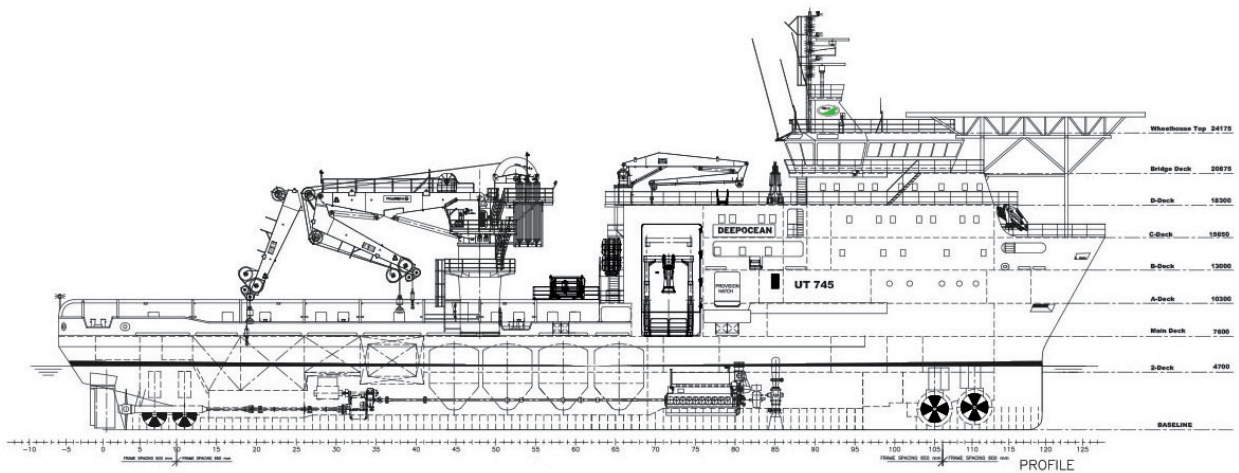
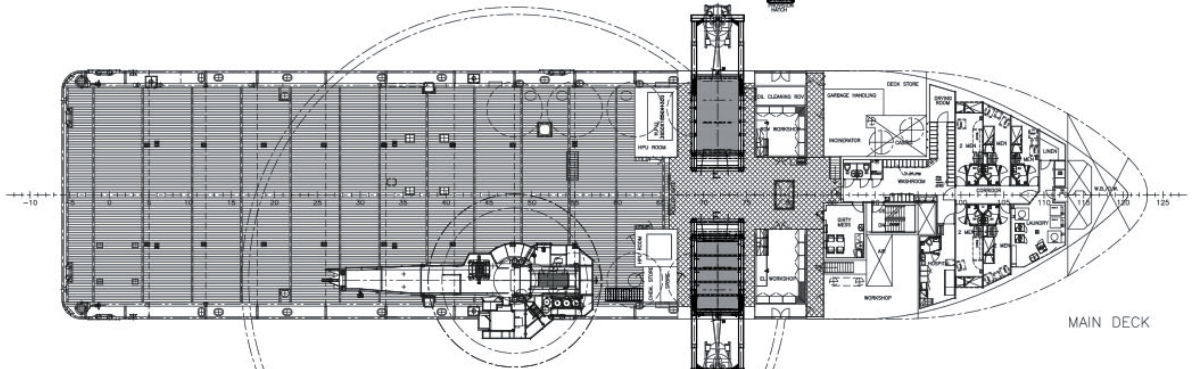
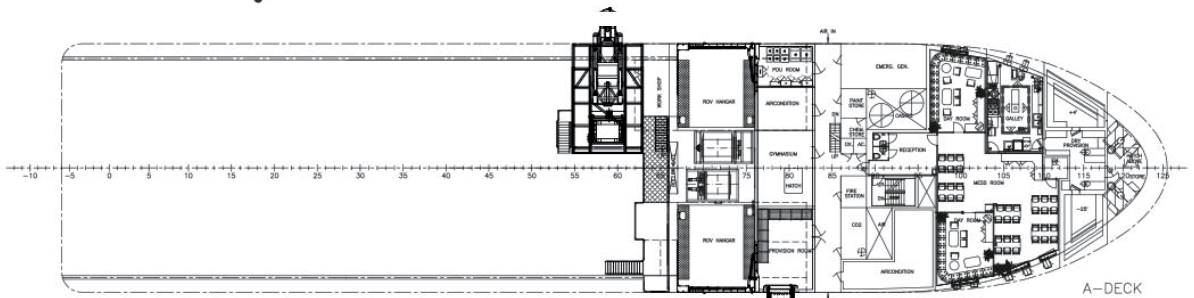
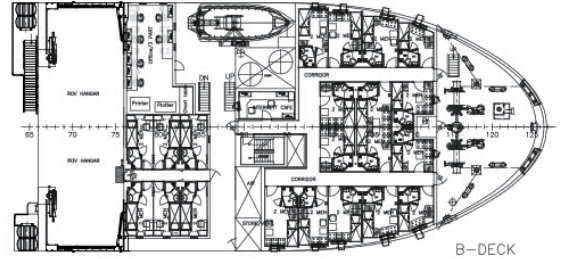
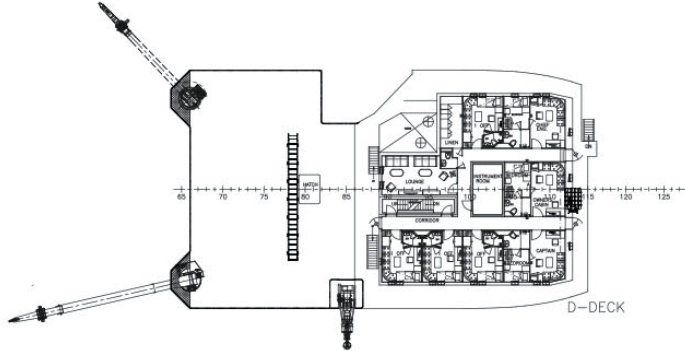
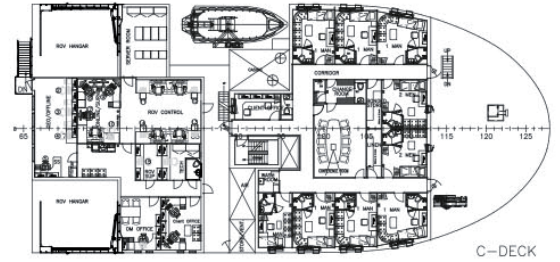
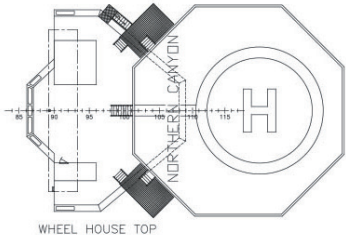
MESS ROOM	A-deck
RECREATION ROOM	1 smokers TV lounge, 2 nonsmokers TV lounges, fitness room, internet café
CONFERENCE ROOM	C-deck
WARDROBE / RECEPTION	Main-deck
CLIENT OFFICE	2 x client offices, C-deck
ONLINE/ROV CONTROL ROOM	C-deck
OFFICES	5 offices, 1 on B-deck, 4 on C-deck
WORKSHOP	2XROV workshops on Main-deck, deck workshop main-deck
DUTY MESS	Main-deck
FITNESS AREA	Approx. 24m ²
TOTAL NUMBER OF BUNKS	70
SINGLE CABINS	14
2-MAN CABINS	28
HOSPITAL	1, Main-deck

DYNAMIC POSITIONING SYSTEM

DP SYSTEM	Kongsberg Simrad. SDP-21 Green DP-function
REF. SYSTEM	Hipap 500 port side, HIPAP 201 stb.side 2x HPR. (HIPAP 500 and 501) 2x DGDS – Seatex DPS 116 and Seatex DPS 200 1x Fan Beam laser radar 1x Tantwire Bandah

NAVIGATIONAL EQUIPMENT

RADAR 1	1 x Furuno FR 2835 S, 10 cm
RADAR 2	1 x Furuno FR 2115, 3 cm
AUTO PILOT	Sperry ADG 4000
SATELLITE NAVIGATOR	Furuno GN 80 m/D-GPS Kort
LOG	Furuno DS-80
AIS	SAAB AISGPS positioning system
ECHOSOUNDER	Furuno FE 700
GYRO COMPASS	Three x PLATH NAVIGATE X MK 1
NAVTEX RECEIVER	Furuno NX 500
VOYAGE DATA RECORDER	Rutter VDR-100G2
RADIO STATION	GMDSS-Sea area A3. Furuno FS 1562, includes HF/MF, Inmarsat C and Sailor 500 Fleetbroadband
VHF	2 x Furuno FM-8700, 1 x Sailor plus base station in 60 t crane and FRC.



Revision Date 16.05.2017

DeepOcean accepts no responsibility for and disclaims all liability for any errors and/or omissions in this production.

SPECIFICATION SUBJECT TO CHANGE WITHOUT NOTICE.

www.deepoceangroup.com