

Delta SubSea

Test Tank



Delta SubSea's new state-of-the-art test tank is a resource for the subsea oil and gas industry, as well as industrial researchers, product developers, colleges and government.

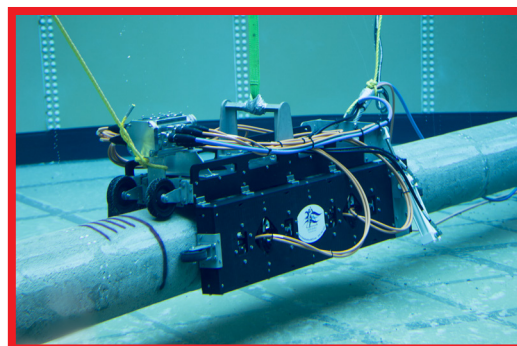
The 220,000-gallon test tank provides the capability for comprehensive in-water testing of ROVs, tooling and full scale subsea equipment. The Test tank is invaluable for testing, final trimming of new systems and the development of improvements to existing products in a controlled environment.

The Tank is 38 ft diameter by 25 ft water depth, surrounded on top by an observation platform. Six view ports, are built around the tank at head-height to enable monitoring of operations.

The filtration system, which provides excellent water quality, consists of two high performance bronze pumps designed to provide high flow rate, 250 GPM each, and continuous operation, and two high performance sand filters. The tank can hold either fresh or salt water.

A team of electronic and mechanical engineers are available to support customers. Capabilities include: design and manufacturing of test stands, mock-ups and support equipment. The instrumentation suite includes: High Definition Pan&Tilt cameras and a complete monitoring and recording system. 110V and 440V power is available. External lighting system and facility security system assure 24h operations.

The DSS Test Tank is available for hire, for Testing, FAT, SIT of equipment.



Delta SubSea
DeltaSubSea-ROV.com
1.936.582.7237