

PRINCIPAL PARTICULARS

LOA 302'-0"  
 LBP - LWL 290'-0"  
 BEAM 64'-0"  
 DEPTH 26'-0"  
 LOADLINE DRAFT 21'-1"  
 DEADWEIGHT 5197 LT  
 DESIGN DECK LOAD 1024 PSF (5mT/m<sup>2</sup>)  
 GENERATORS (4) X 1825KW @ 1,800 RPM (WATER-COOLED), (2) AUXILIARY X 940 KW @ 1,800 RPM (WATER-COOLED)  
 TOTAL KILOWATTS 9,180 KW @ 690 VAC  
 MAIN PROPULSION (2) X 2,500KW @ 690 VAC @ 1,000 RPM (6,704HP TOTAL) FIXED PITCH VFD Z-DRIVE IN NOZZLES  
 BOW THRUSTERS (2) X 1,180 KW @ 690 VAC @ 1,200 RPM (3,164HP TOTAL) FIXED PITCH VFD/REVERSING MOTORS  
 FIRE MONITORS (2) x 5284 GPM/ (495KW @ 690 VAC) 665HP/394' REACH - REMOTE CONTROLLED FIRE MONITORS  
 MAIN CRANE 150mT @ 10m, 25mT @ 32m  
 STORES CRANE 13mT @ 5m  
 FRC 1 X 15 PERSON, 6.18M, 250HP  
 REGULATORY USCG SUB I & L /SOLAS/ABS ✕ A1, OFFSHORE SERVICE VESSEL, ✕ AMS, DPS-2, ENVIRO  
 ✕ ACCU, UWILD, FiFi I, ✕ (E), HELIDK, CRC

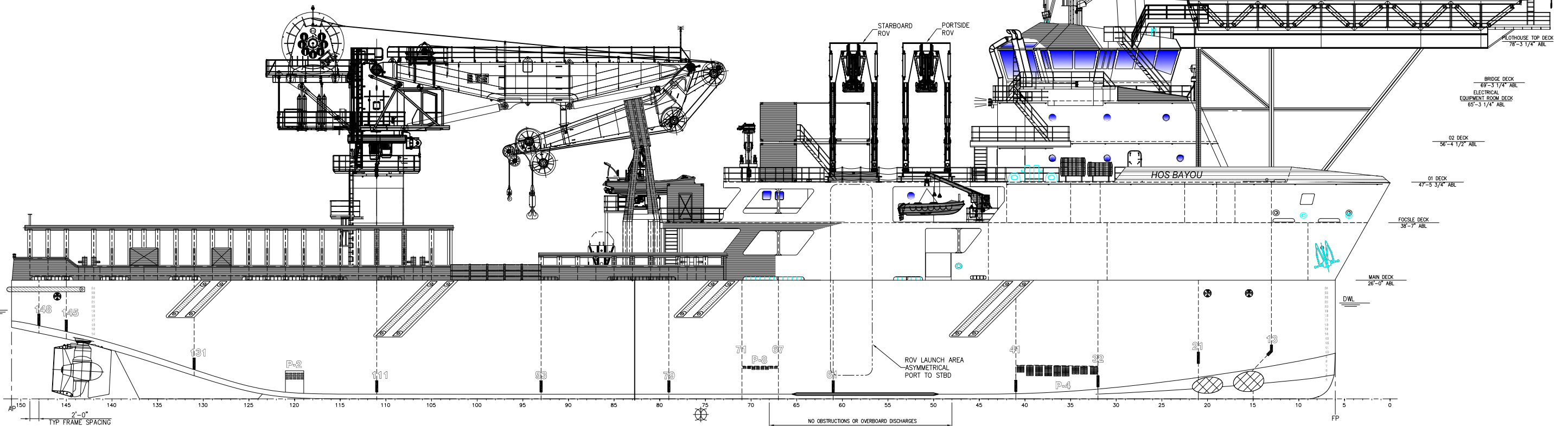
TANK CAPACITIES

WATER BALLAST 592,554 US GAL (98% FILL)  
 TOTAL FUEL OIL (W/SHIPS FO) 279,936 US GAL (98% FILL)  
 SHIP'S FUEL OIL 23,277 US GAL (98% FILL)  
 POTABLE WATER 61,287 US GAL (98% FILL)  
 LIQUID MUD 20,652 BARRELS (98% FILL)  
 METHANOL 1,921 BARRELS (98% FILL)  
 DRY BULK (SG = 2.4) 14,347 CU. FT.  
 SEWAGE 24,869 US GAL (98% FILL)  
 GREY WATER 24,869 US GAL (98% FILL)

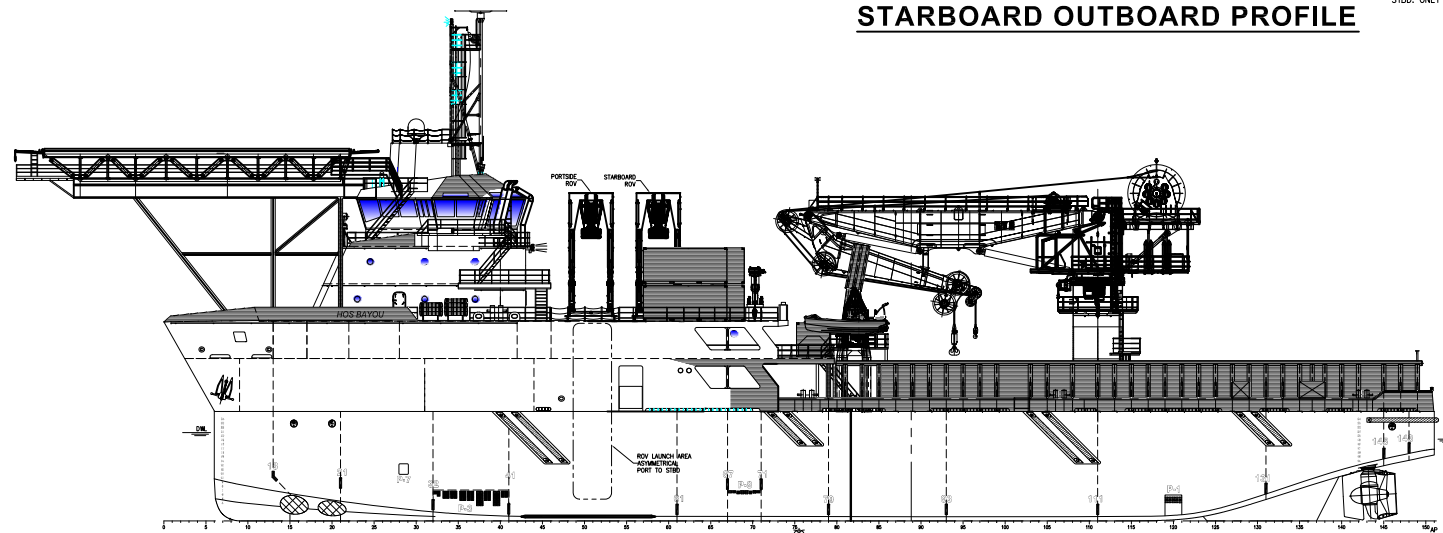
ACCOMMODATIONS SUMMARY TABLE

ACCOMMODATIONS 73  
 STATEROOMS 24  
 HEADS 26  
 LOUNGE 2  
 LAUNDRY AREA 1  
 GALLEY 1  
 MESS AREA 1  
 SICK BAY 1  
 CONF. RM 1

REVISIONS			
REV	DESCRIPTION	BY	DATE
1	REVISION IS A CUMULATIVE REVISION INCORPORATING INTERNAL & EXTERNAL COMMENTS, AS-BUILT REVISIONS, AND CHANGE ORDERS.	AJR	6-13-14
2	GENERAL UPDATES INCORPORATING AS-BUILDS.	AJR	9-3-14
3	UPDATED HELIDeck, EXTENDED POCSLE DECK.	RJW	11-17-14
4	UPDATED POB WITHOUT 12 MAN CONT.	RJW	2-09-15
5	TASK 6324: STED CARGO RAIL MODIFICATIONS	JWH	3-04-16
6	TASK 6339: FAST RESCUE BOAT DAVIT INSTALL	PMD	4-01-16



STARBOARD OUTBOARD PROFILE



PORT OUTBOARD PROFILE

HOS BAYOU MPSV

**HORNBECK OFFSHORE SERVICES**

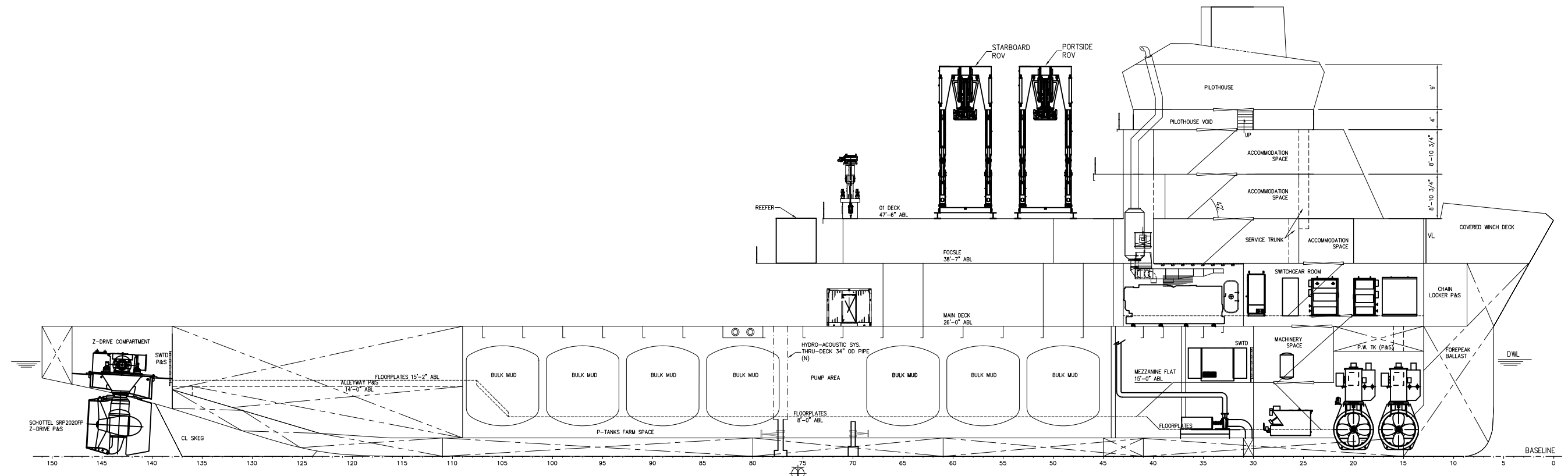
THIS DRAWING, DESIGN CONCEPT AND SPECIFICATIONS ARE THE PROPERTY OF HORNBECK OFFSHORE SERVICES AND ARE FURNISHED ON A CONFIDENTIAL BASIS WITH AN EXPRESSED UNDERSTANDING THAT THEY WILL NOT BE COPIED IN ANY MANNER USED FOR MANUFACTURING, SOLD, TRANSMITTED, NOR USED TO THE DETRIMENT OF HOS FROM WITHOUT WRITTEN PERMISSION.

**DRAWN BY:** A. RHODA  
**CHK'D. BY:** R. WESENBERG  
**APP'D. BY:** P. LUBRANO  
**TASK #:** 6324

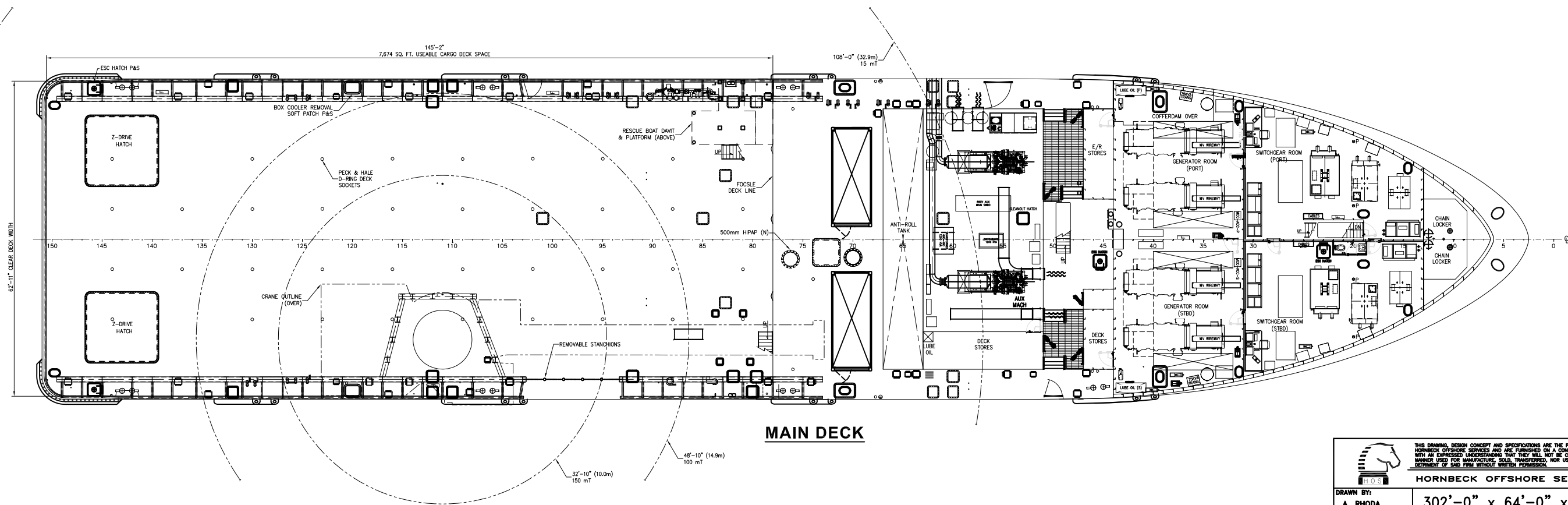
**SCALE:** 3/32"=1'-0"  
**DRAWING #:** 1.001

**DATE:** 7-21-2018  
**HULL #:** ESG-205  
**SHEET:** 1 OF 4

**REV.:** 6

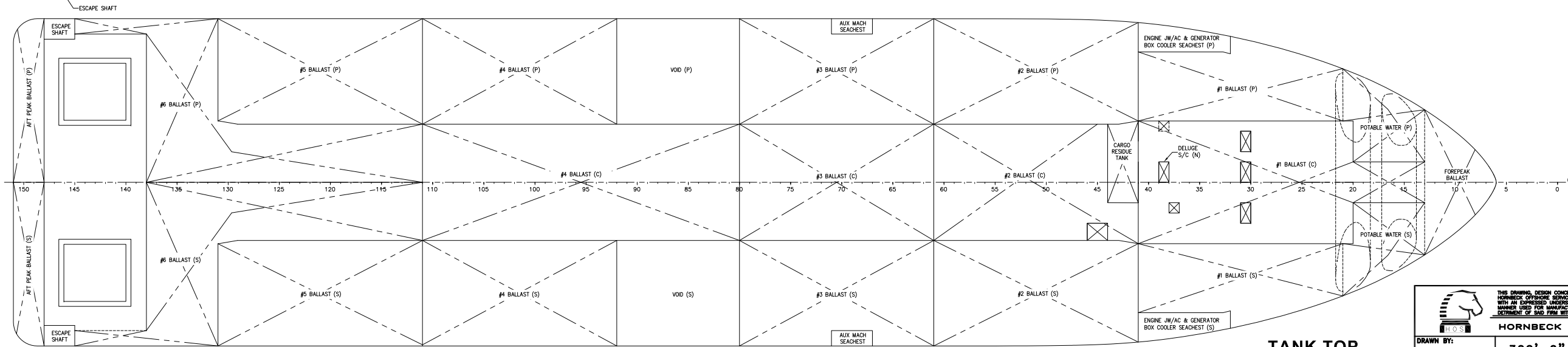
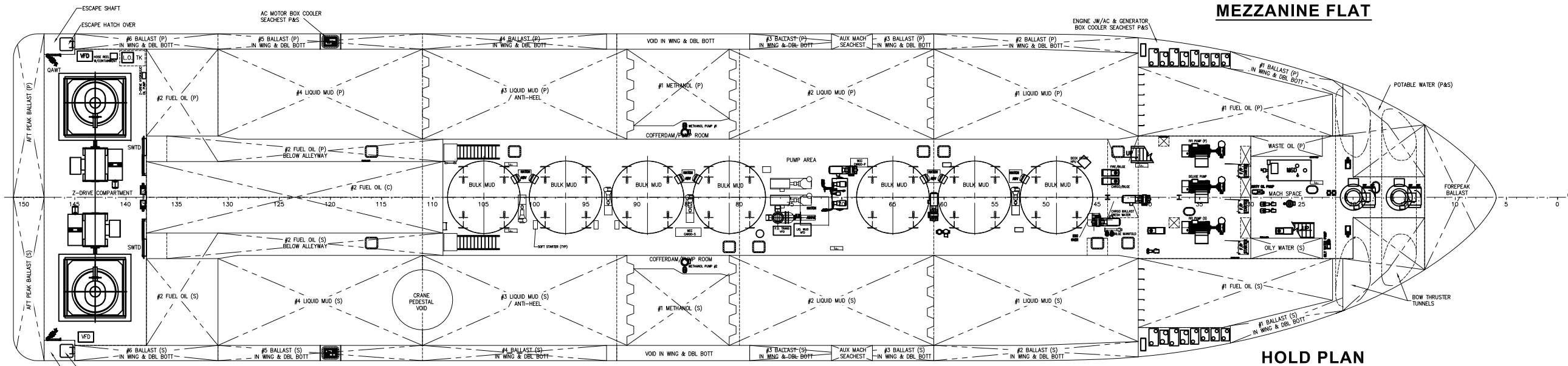
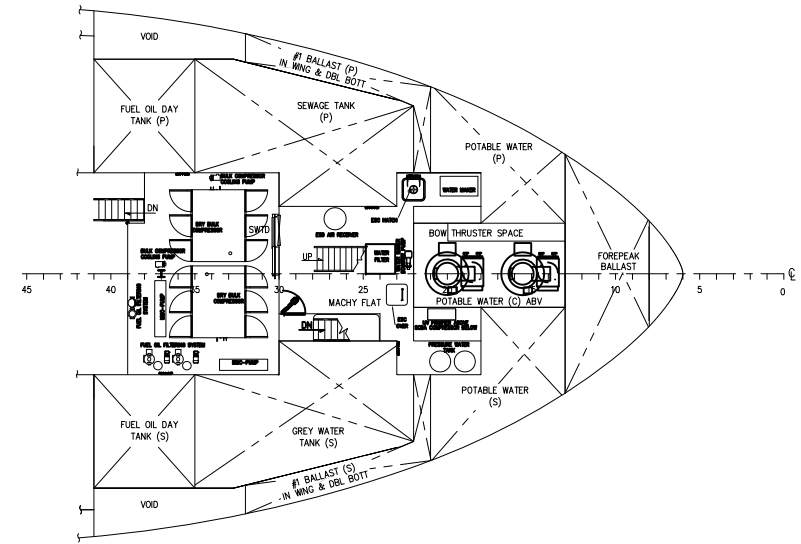


**INBOARD PROFILE**



**MAIN DECK**

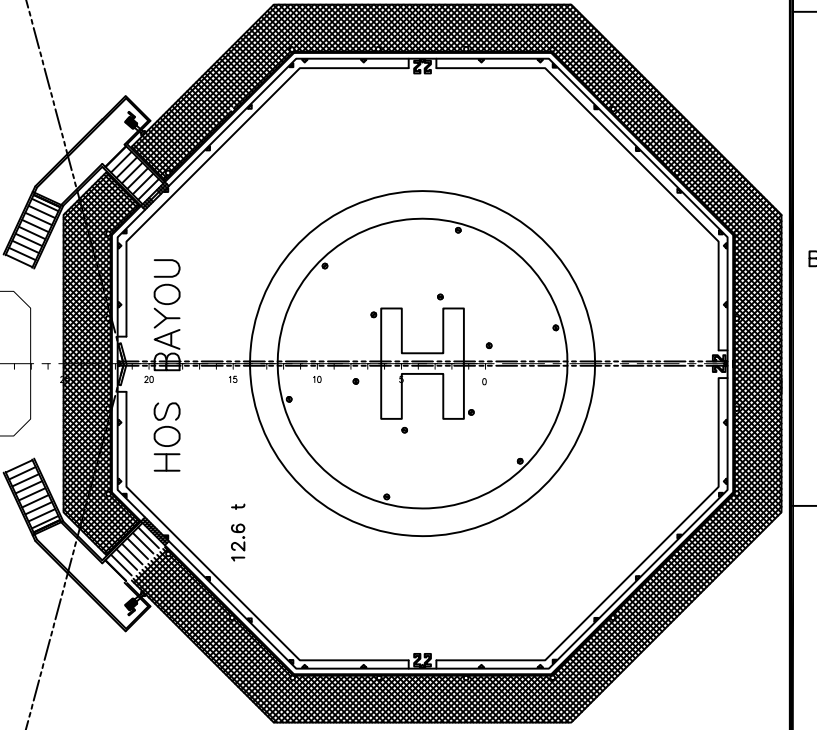
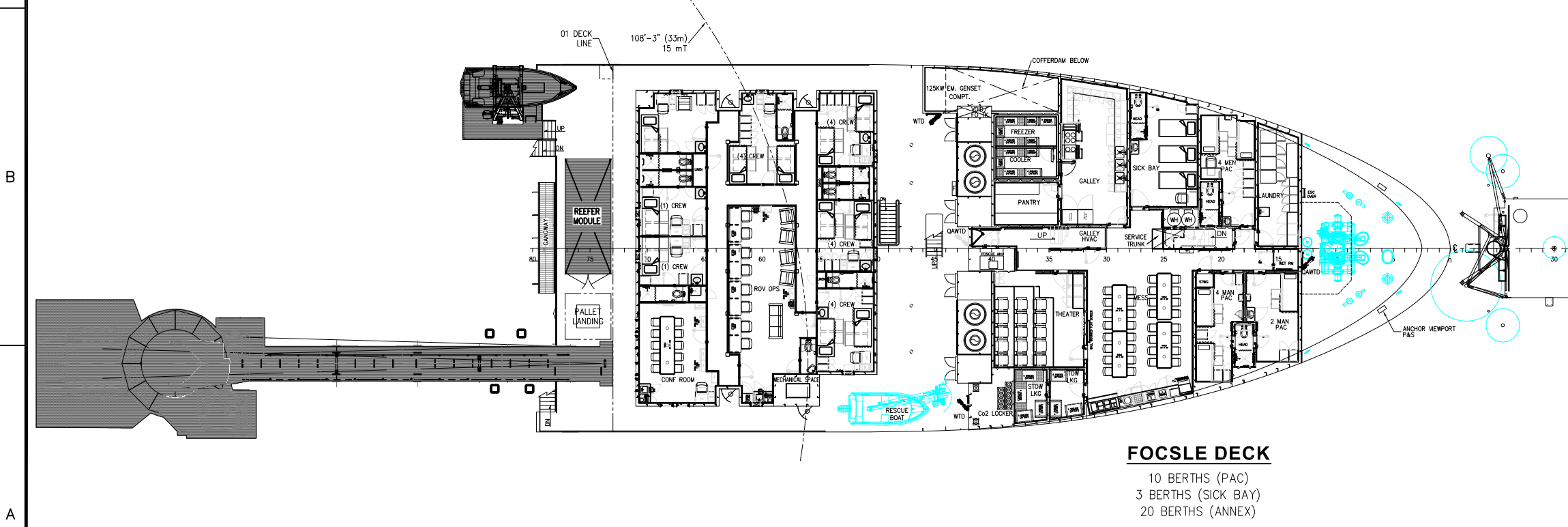
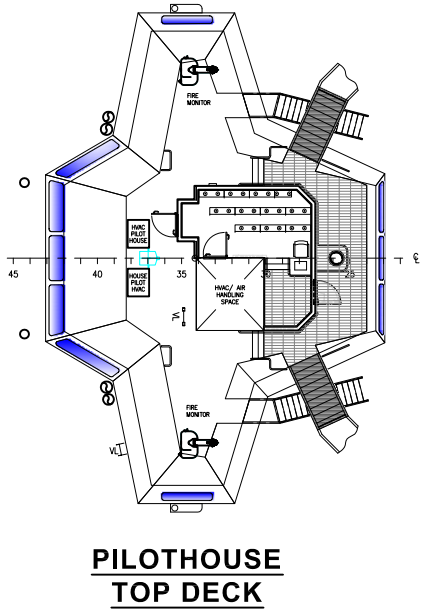
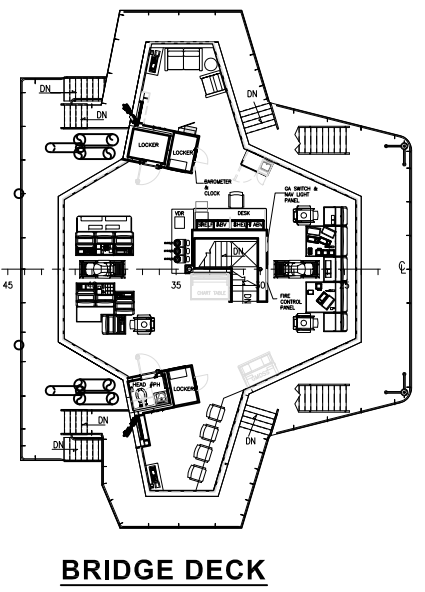
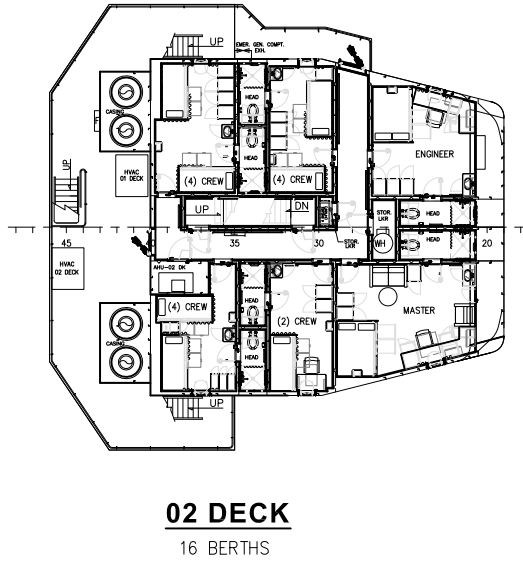
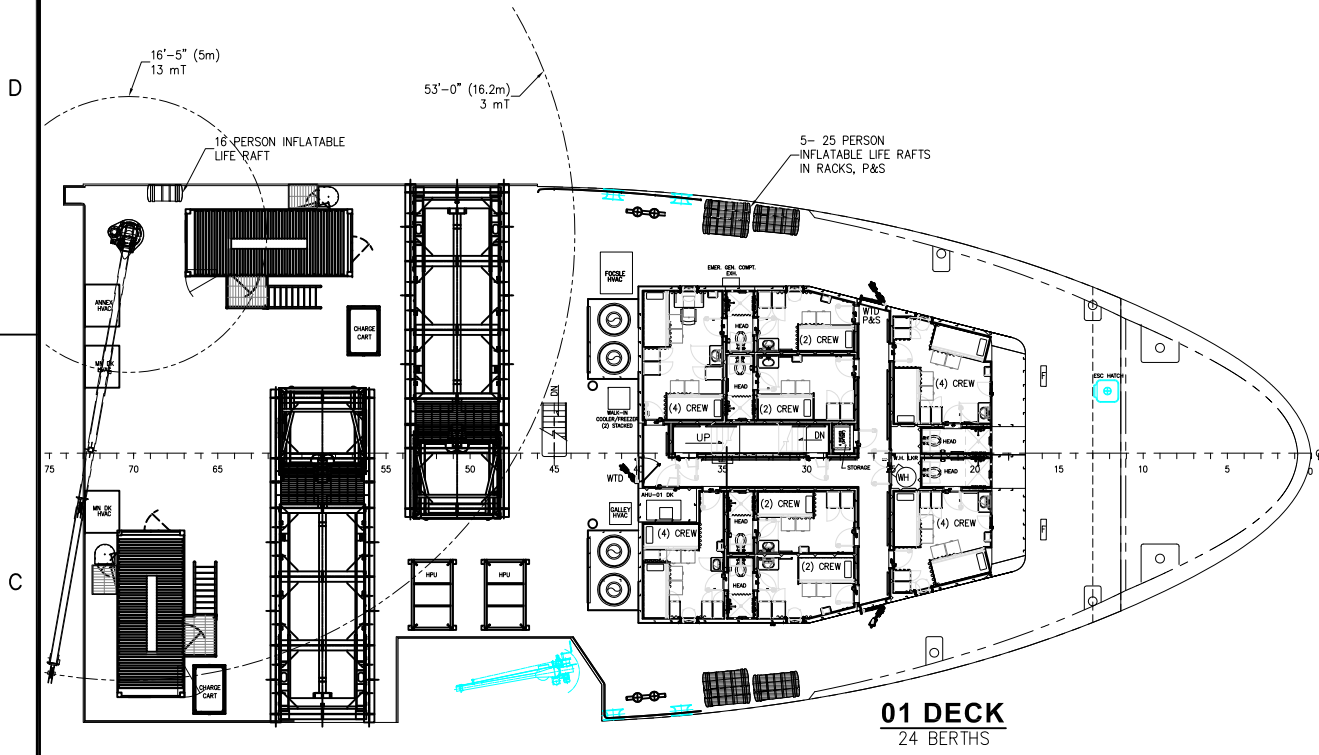
<p><b>HORNBECK OFFSHORE SERVICES</b></p>			
<p><b>DRAWN BY:</b> A. RHODA</p>	<p><b>302'-0" x 64'-0" x 26'-0"</b></p>		
<p><b>CHK'D. BY:</b> R. WESENBERG</p>	<p><b>GENERAL ARRANGEMENT &amp; OUTBOARD PROFILE</b></p>		
<p><b>APP'D. BY:</b> P. LUBRANO</p>	<p><b>SCALE:</b> 3/32" = 1' - 0"</p>	<p><b>DATE:</b> 7-21-2013</p>	<p><b>REV.</b> 6</p>
<p><b>TASK #</b> 6324</p>	<p><b>DRAWING #</b> 1.001</p>	<p><b>HULL #</b> ESG-205</p>	<p><b>SHEET 2 OF 4</b></p>



**HORNBECK OFFSHORE SERVICES**

THIS DRAWING, DESIGN CONCEPT AND SPECIFICATIONS ARE THE PROPERTY OF HORNBECK OFFSHORE SERVICES AND ARE FORWARDED ON A CONFIDENTIAL BASIS WITH AN EXPRESSED UNDERSTANDING THAT THEY WILL NOT BE COPIED OR IN ANY MANNER USED FOR MANUFACTURING, BUILD, TRANSPORT, NOR USED TO THE DETRIMENT OF SAID FROM WITHOUT WRITTEN PERMISSION.

DRAWN BY: <b>A. RHODA</b>	<b>302'-0" x 64'-0" x 26'-0"</b>		
CHK'D. BY: <b>R. WESENBERG</b>	GENERAL ARRANGEMENT & OUTBOARD PROFILE		
APP'D. BY: <b>P. LUBRANO</b>	SCALE: 3/32" = 1' - 0"	DATE: 7-21-2018	REV. <b>6</b>
TASK # <b>6324</b>	DRAWING # <b>1.001</b>	HULL # <b>ESG-205</b>	SHEET 3 OF 4



<p>HORNBECK OFFSHORE SERVICES</p>			
DRAWN BY:	A. RHODA	302'-0" x 64'-0" x 26'-0"	
CHK'D. BY:	R. WESEBERG	GENERAL ARRANGEMENT & OUTBOARD PROFILE	
APP'D. BY:	P. LUBRANO	SCALE: 3/32" = 1' - 0"	DATE: 7-21-2018
TASK #	6324	DRAWING #	1.001
		HULL #	ESG-205
		SHEET	4 OF 4
		REV.	6