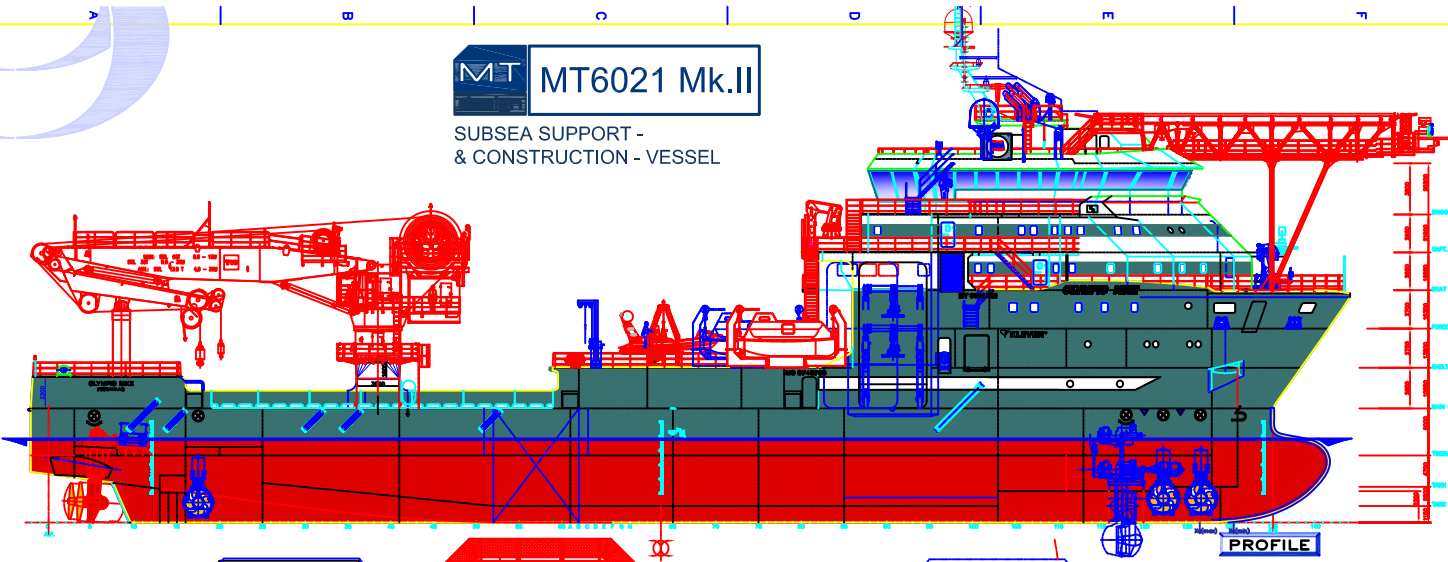
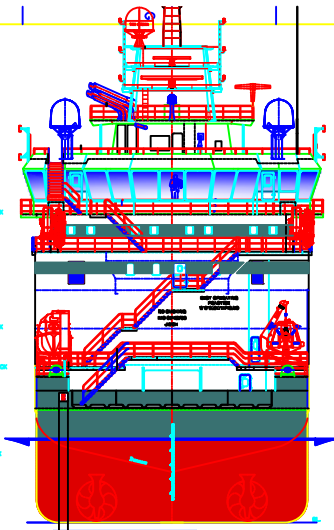


MT6021 Mk.II

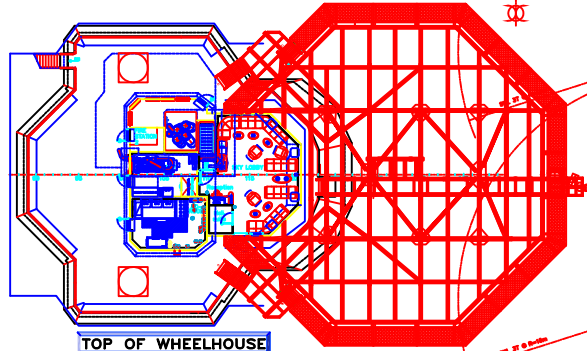
SUBSEA SUPPORT -
& CONSTRUCTION - VESSEL



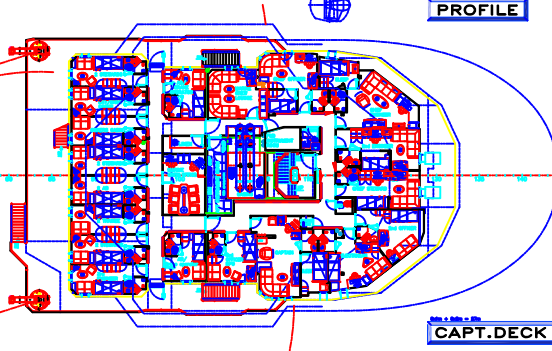
PROFILE



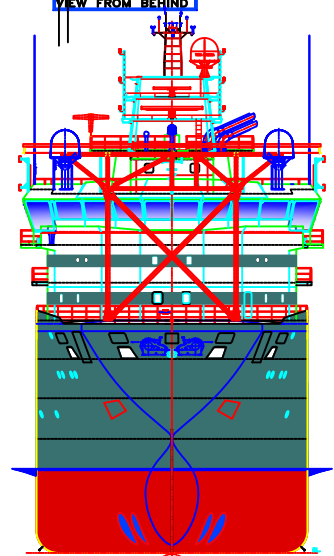
VIEW FROM BEHIND



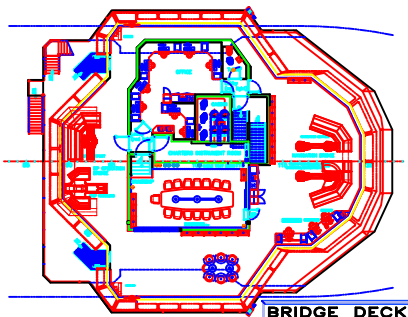
TOP OF WHEELHOUSE



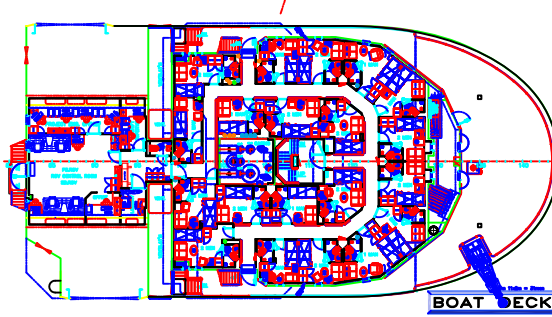
CAPT. DECK



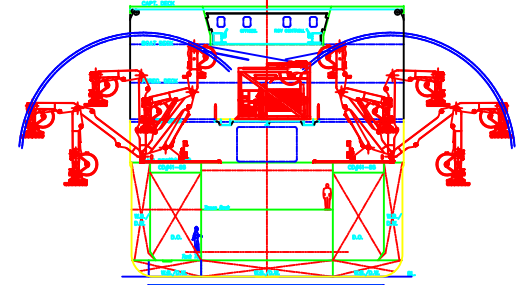
FRONT VIEW



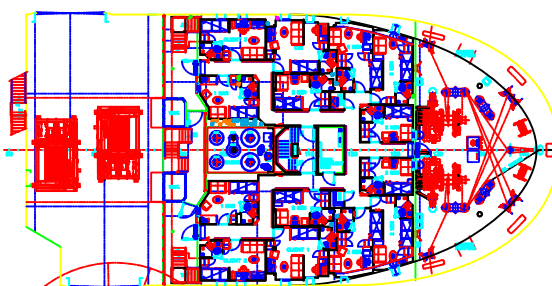
BRIDGE DECK



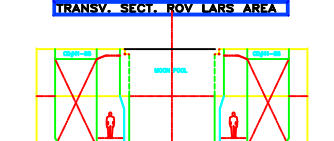
BOAT DECK



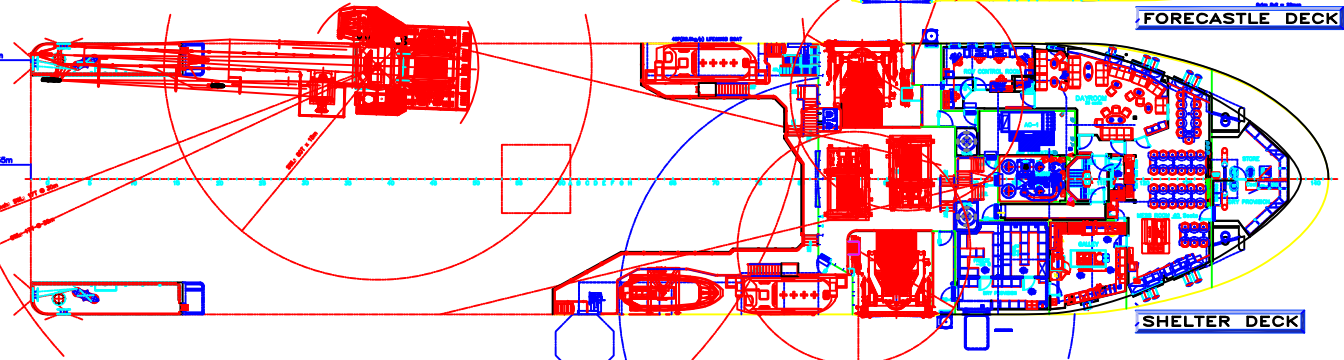
TRANSV. SECT. ROV LARS AREA



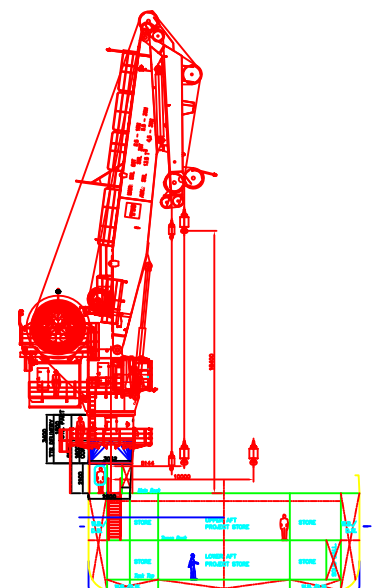
FORECASTLE DECK



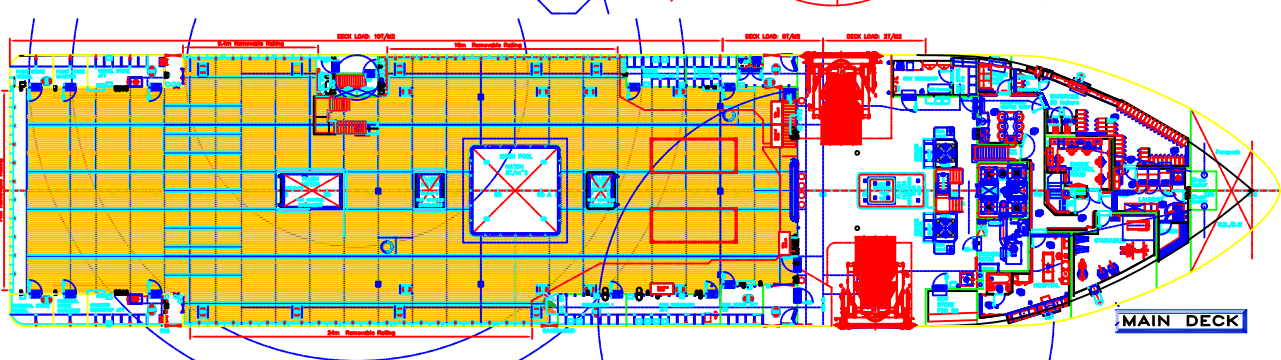
TRANSV. SECT. Fr.80



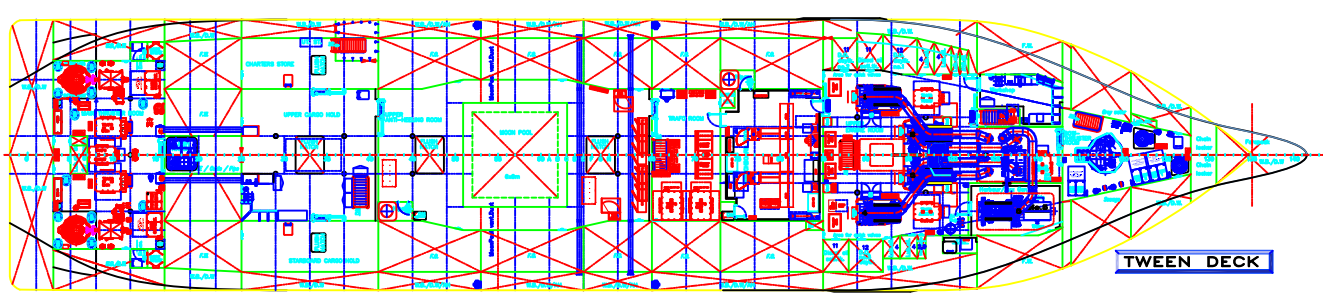
SHELTER DECK



TRANSV. SECT. Fr.39



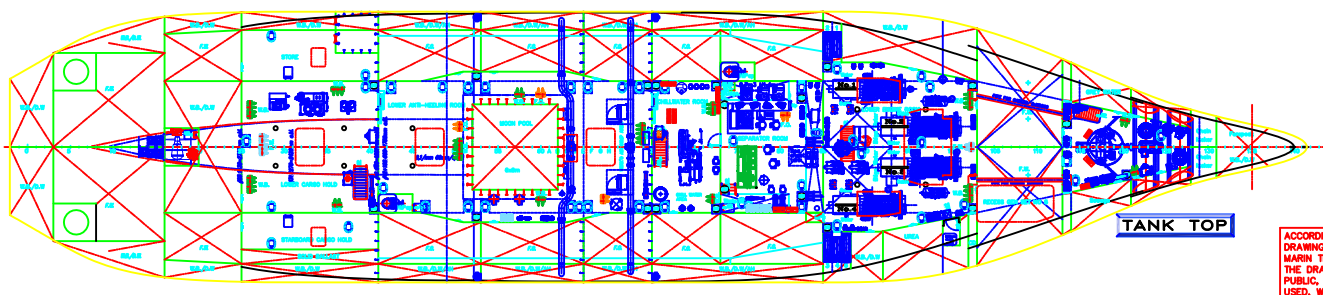
MAIN DECK



TWEEN DECK

MAIN DIMENSIONS:	
Length o.a.:	92.55m
Length b.p.p.:	85.90m
Breadth mid:	19.00m
Depth maindeck:	8.00m
Depth sh.deck:	10.85m
Frame Spacing:	600 mm
Fresh water:	750 m³
Fuel oil:	1300 m³
Anti Heeling:	845 m³
Lub oil:	40 m³
Bilge Water storage:	50 m³
Miscellaneous tks:	130 m³
Water ballast:	2760 m³
GRT:appr.~	6000 NRT:appr.~1600
Accommodation for 80 Pers.	
24 x 1 man cabins	
28 x 2 men cabins	
WORK DECK AREA: ~900m²	

Main prop.:	2x1500kW
Tunnel tr.bow:	2x790kW
Tunnel tr.stern:	1x680kW
Auxiliary bow:	1x280kW
MainEng.:	2x2250+3x1700kW
TOTAL EL.POWER:	9600kW



TANK TOP

ACCORDING TO INTERNATIONAL LAWS THIS DRAWING IS THE PROPERTY OF MARIN TEKNOK A.S. THE DRAWING CAN NOT BE MADE PUBLIC, COPIED OR OTHERWISE USED, WITHOUT OUR WRITTEN CONSENT. MARIN TEKNOK AS, Dragvoll, N-2050 GARDERVI, NORWAY

3	23.04.2015/MSI	See GA Logfile rev 3 for info.			
2	21.01.2015/MSI	See GA Logfile rev 2 for info.			
1	04.11.2014				
PROJECT: MT6021 MkII for OLYMPIC SHIPPING. Hull no. 378 at KLEVEN MARITIME					
GENERAL ARRANGEMENT					
DATE:	28.08.2015	CHECKED:	SCALE:	CUSTOMER:	PROJECT No.:
DRAWN:	S.A.Østved	PLANNED:	1:175	KLEVEN VERFT AS	2340-01
APPROVED:		DATE:		Dimro	REVISION:
		10.08.2014		N-6285 ULSTERNK	3
				MARIN TEKNOK A.S.	DRAWING No.:
				Dragvoll Industriområde	AO
				N-2050 GARDERVI, NORWAY	101-100
				Phone No.:+47 700 83 400	
				E-mail:post@marinteknik.no	
				www.marinteknik.no	