

# MAERSK CONNECTOR

SPECIFICATION SHEET



## MAERSK CONNECTOR CABLE LAY VESSEL

The Maersk Connector is an advanced flexible product installation vessel for HVAC, umbilicals and bundled HVDC power cable via its unique and innovative, dual basket 7000te capacity carousel.

The Maersk Connector is able to deliver all the capabilities of a DP2 installation vessel without sacrificing shallow water workability. Equipped with a 7 point mooring system, the vessel can manoeuvre on a comprehensive anchor spread, allowing close approach for shore end installations. The vessel is certified to ground out fully loaded in suitable ground conditions for beach operations.

In addition, the vessel can be mobilised with the ACP2 cable plough, the first plough in the offshore industry fully designed for optimum performance in all areas, but specifically for the safe handling, burial and immediate backfill of large diameter power cables.

## KEY FEATURES

- 7000TE DUAL BASKET CAROUSEL ABLE TO LOAD OR LAY 2 CABLES SIMULTANEOUSLY
- DP2 AND 7 POINT MOORING SYSTEM
- SHALLOW WATER OPERATIONS AND ABILITY TO GROUND FULLY LOADED FOR SHORE APPLICATIONS
- 50TE AHC SUBSEA CRANE WITH DOUBLE FALL CAPACITY
- 60TE A-FRAME
- 2310M<sup>2</sup> DECK AREA, 20TE/M<sup>2</sup> DECK STRENGTH
- WORK CLASS ROV
- ACCOMMODATION FOR 90 PEOPLE

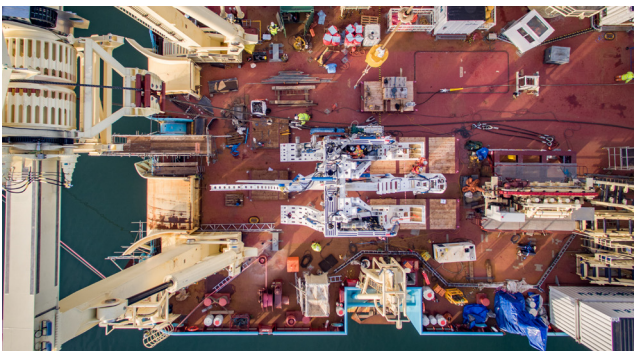
The Maersk Connector is not limited to these parameters and can be modified by DeepOcean to complete worksopes in excess of its current configuration.

## GENERAL

<b>BUILT BY</b>	Damen Shipyards Galati, Romania
<b>DELIVERED</b>	2016
<b>CLASS</b>	Lloyd's Register of Shipping +100A1, Cable Laying Ship +LMC,UMS, D.P. (A.A) Load and unload aground
<b>TOTAL POB</b>	90 persons (46 single cabins and 22 double cabins)

## MAIN PARTICULARS

<b>LENGTH (L.O.A)</b>	138.35m	
<b>DEADWEIGHT</b>	9300te	
<b>BREADTH</b>	27.45m	
<b>DRAFT</b>	Max 6.25m, Min 3.6m	
<b>DP CLASS</b>	DP2	
<b>DP SYSTEM</b>	MT Bridge Mate DP System	
<b>MAIN GENERATORS</b>	2 X MAK 8M25C 2 X MAK 6M25C 2 x Caterpillar 3512C	2560KW 1913KW 1400KW
<b>PROPULSION</b>	2 x Azimuth Thrusters 3 x Bow Tunnel Thrusters	2100KW 1250KW
<b>SPEED</b>	Max Speed Economical Speed	11.7Kn 10.5Kn
<b>7 POINT ANCHOR SPREAD</b>	Pull Ahead Winch 2 x Fwd Winches 4 x Fwd Winches Wire / Winch Anchors Tug Management	135te Pull 1st Layer 60te Pull 1st Layer 60te Pull 1st Layer 1000m 6 x 7 Flipper Delta EIVA TMS
<b>FUEL OIL</b>	1773m <sup>3</sup> Marine Gas Oil 1430m <sup>3</sup> Heavy Fuel Oil (IFO 380)	
<b>BALLAST WATER</b>	7400m <sup>3</sup>	
<b>FRESH WATER</b>	804m <sup>3</sup>	
<b>DECK AREA</b>	2310m <sup>2</sup>	
<b>DECK STRENGTH</b>	20te/m <sup>2</sup>	
<b>DECK LOAD CAPACITY</b>	Approx. 8500te	
<b>HELIDECK</b>	21 D Diameter CAP 437 Suitable for Sikorsky 92 12te take of weight	



## DUAL BASKET CAROUSEL

### SINGLE BASKET MODE

<b>CAPACITY</b>	7000te
<b>OUTER DIAMETER</b>	27.4m
<b>INNER DIAMETER</b>	4.7m, Stanchion Posts 6m, 10m and 13m
<b>BASKET HEIGHT</b>	7.5m Nominal Height
<b>PRODUCT STACK HEIGHT</b>	6.5m Nominal Stack Height
<b>LAY SPEED</b>	1200m/HR Max
<b>CAROUSEL ACCELERATION</b>	0 - Max Speed - 20 sec
<b>CAROUSEL STOP</b>	11 Seconds from full load, full speed
<b>PRODUCT RANGE</b>	Ø20mm - Ø610mm
<b>MBR THROUGH SYSTEM</b>	5m MBR
<b>DUAL BASKET MODE</b>	
<b>INNER BASKET</b>	3500te Capacity 4.7m-18.4m Diameter
<b>OUTER BASKET</b>	3500te Capacity 20m-27.4m Diameter
<b>HAULING TENSIONERS</b>	2 x 5te 2 track tensioners mouted on loading tower
<b>LOADING ARMS</b>	2 x 5m MBR hydraulic loading arms
<b>LAY TENSIONERS</b>	2 x 15te electric drive, two track tensioners

## LIFTING EQUIPMENT

<b>OFFSHORE CRANE</b>	Cargotec Knuckle Boom AHC Crane Single Fall Lift Mode 50te @ 18m AHC 22te @ 35m AHC 2000m effective working depth Double Fall Lift Mode 100te @ 11m AHC 20te @ 35m AHC 300m Working Depth
<b>STIFF BOOM DECK CRANE</b>	Legendijk Stiff Boom Crane, 10te @25m
<b>A-FRAME</b>	Lifting Capacity 60te

## WROV

Supporter 19 WROV

## ACP2 PLOUGH

<b>BURIAL DEPTH</b>	up to 3.3m
<b>MAX PRODUCT DIAMETER</b>	300mm
<b>MAX BOLLARD PULL</b>	150te

Revision Date 19.05.2017

DeepOcean accepts no responsibility for and disclaims all liability for any errors and/or omissions in this production.

SPECIFICATION SUBJECT TO CHANGE WITHOUT NOTICE.

[www.deepoceangroup.com](http://www.deepoceangroup.com)